

Specifications

Balance 310X	
WAN Interface	2x USB Interface 2x GE 1x Embedded LTE-A Modem with Redundant SIM Slot
SpeedFusion Hot Failover	●
SpeedFusion WAN Smoothing	●
SpeedFusion Bandwidth Bonding	●
Number of PepVPN SpeedFusion Peers	2/30*
LAN Interface	9x GE
Router Throughput	2.5 Gbps
PepVPN/SpeedFusion Throughput	No Encryption: 600 Mbps 256-bit AES: 500 Mbps
LTE Modem	LTE Advanced Pro CAT-12/ CAT-18 CAT 12: Downlink/Uplink Datarate: 600 Mbps/150 Mbps CAT 18: Downlink/Uplink Datarate: 1.2 Gbps/150 Mbps
Recommended Users	50-500
Cellular and GPS Antenna Connector	2x SMA Antenna Connectors (for CAT-12) 4x SMA Antenna Connectors (for CAT-18) 1x SMA GPS Antenna Connector
Power Input	Power Din DC: 12V - 30V
Power Consumption	30W (max.)
Dimensions	1.7 x 11.5 x 7.0 inches 43 x 292 x 177 mm
Weight	7.28 pounds 3.3 kg
Operating Temperature	-40° – 149°F -40° – 65°C
Humidity	15% – 95% (non-condensing)
Certifications	FCC, CE, RoHS
Warranty	1-Year Limited Warranty

* 2 SpeedFusion Peers are enabled by default. Can be increased to 30 Peers with purchase of SpeedFusion license SFN-LC-30.

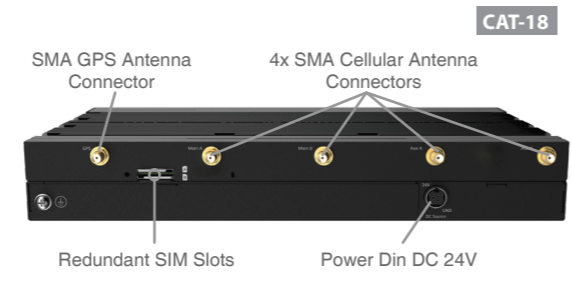
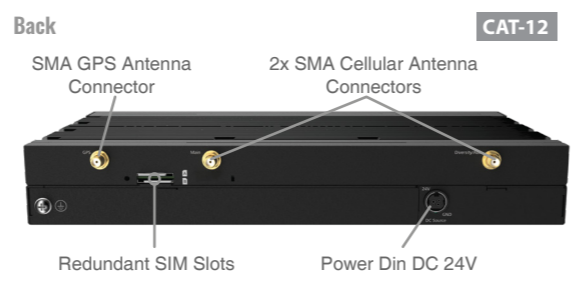
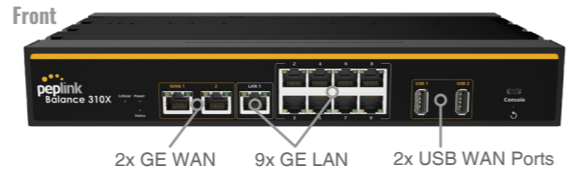
Ordering Information

Product Code	Carrier/ Category	Embedded Modems	4G Bands	3G Bands
BPL-310X-LTEA-R-T	America / FirstNet / CAT-12	1	B1, B2, B3, B4, B5, B7, B8, B9, B12, B13, B14 , B18, B19, B20, B26, B29, B30, B32, B41, B42, B43, B46, B48, B66	B1, B2, B4, B5, B6, B8, B9, B19
BPL-310X-LTEA-K-T	Global* / CAT-12	1	B1, B2, B3, B4, B5, B7, B8, B9, B12, B13, B18, B19, B20, B26, B28 , B29, B30, B32, B41, B42, B43, B46, B48, B66	B1, B2, B4, B5, B6, B8, B9, B19
BPL-310X-GLTE-G-T	Global / CAT-18	1	B1, B3, B25(B2), B66(B4), B26(B5/B18/B19), B7, B8, B12(17), B13, B14 , B20, B28 , B29, B30, B32, B71, B38, B39, B40, B41, B42, B43, B46, B48	B1, B2, B4, B5(B19), B8

* China & HK TD LTE are excluded.

Add-on Feature

Product Code	Description
SFN-LC-30	Enable up to 30 SpeedFusion Bonding peers for Balance 310X



Peplink Balance 310X

Enterprise SD-WAN router for Medium Branches

Affordable High Performance

The Balance 310X uses all GE ports and offers a routing throughput of 2.5 Gbps. It provides all the connectivity needed to support small and medium sized business operations.



Unbreakable Connectivity with LTE

The Balance 310X provides built-in LTE for seamless failover. Patented SpeedFusion technology combines multiple connections for jitter-free calls and high-speed transfers.

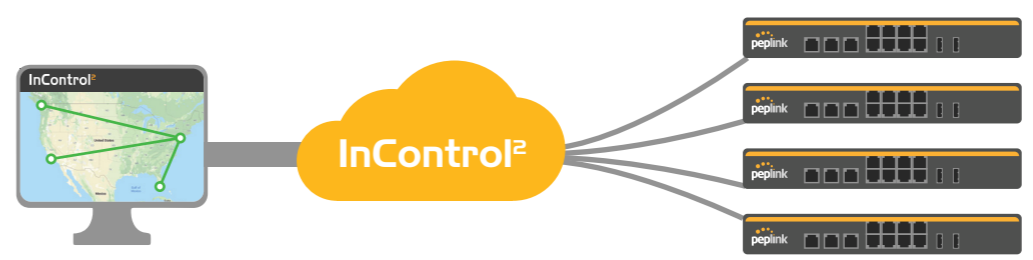


Rugged Industrial-Grade Design



The Balance 310X has a fanless design and a wide temperature range. Drop it into demanding environments and run it for years without worry.

Scalable Management



The Balance 310X comes with the InControl central management system. Easily centralize firewall rules, outbound policy, VLAN, device configurations and more.