

FM1100 AND FM5300 REMOTE LOG

LOG BOOK

Online log book is initiated using command **log2srv** and set right configuration. Device establish *GPRS* connection and activates link to computer, log started to stream to computer until set time is elapsed. To stop streaming immediately **log2srvstop** is used.

COMMANDS

- “SMSlogin<space>SMSpassword<space>**log2srv**<space>1,3,<APN>,<APNusername>,<APNpassword>,<IP>,<port>,600,0”
 - <APN> - operators’ APN which will be used for data sending;
 - <APNusername> - operators’ username;
 - <APNpassword> - operators’ password;
 - <IP> - computer external IP address to which online log will be send after request (“log2srvstart”);
 - <port> - open TCP port in computer;

Example: opa opa log2srv 1,3,banga,,,212.47.84.62,7042,600,0

After such command sent, FM device should connect to computer TCP port over GPRS and send device log for 10min to Hercules program.

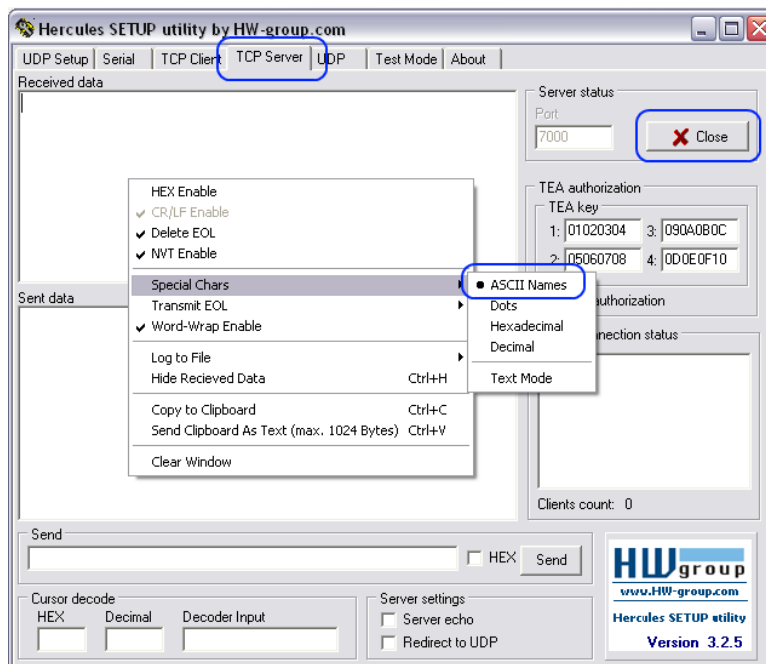
- “SMSlogin<space>SMSpassword<space>**log2srvstop**”

DOWNLOADING LOG USING “HERCULES”

External computer IP and if TCP port is open could be checked here: <http://canyouseeme.org/>

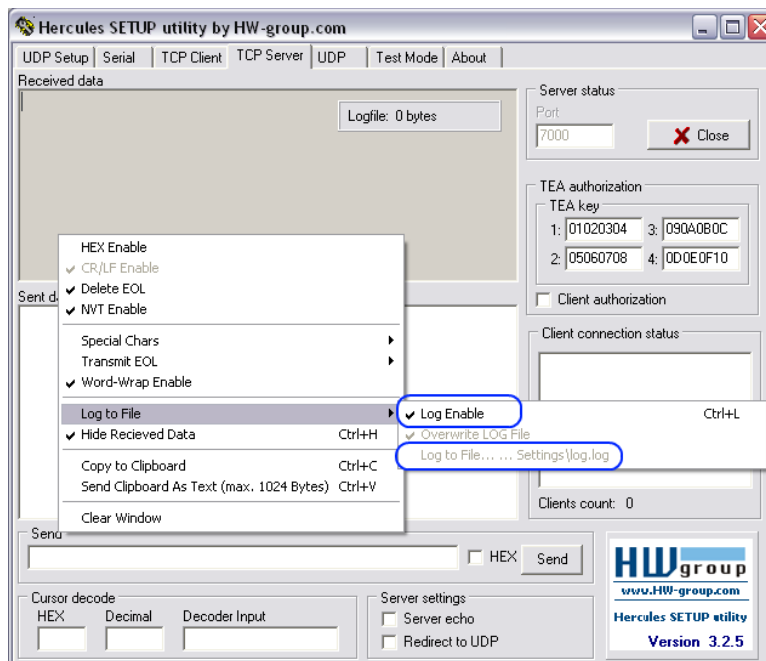
Note, that at the moment Hercules program http://www.hw-group.com/products/hercules/index_en.html must be started and TCP port set for listening.

1. Set PORT and start listen (screen below)
2. set special chars – ASCII

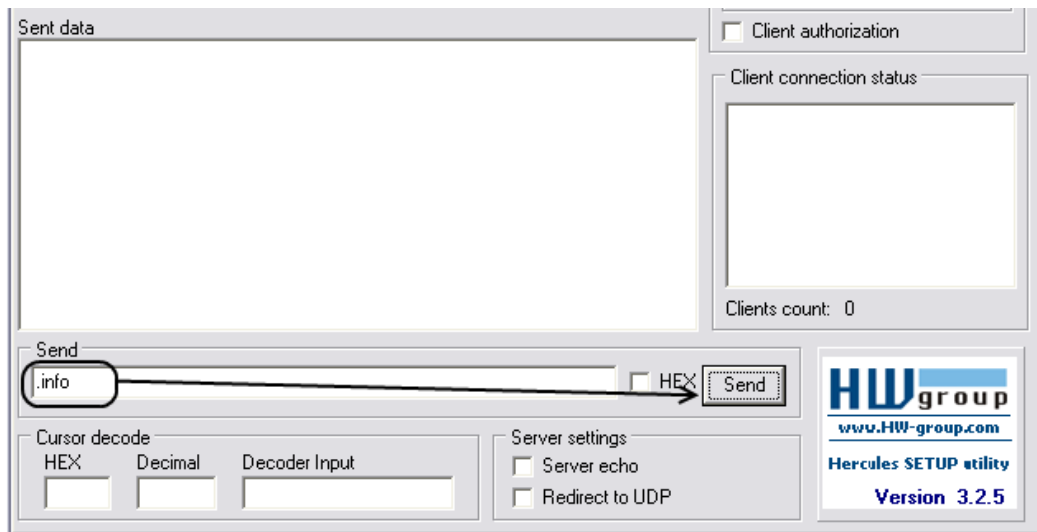


3. Set directory for file download

4. Enable "Log to file" as show below



5. "Terminal" Command sending using Hercules



NOTES

Up to 5 minutes delay could appear if wrong “log2srv” commands settings will be sent, during that time no SMS or GPRS command could be received. SMS will be hanging, after timeout, hanging SMS’s will be proceeded.

FUNCTION HAVE: FM11.VER.01.07.XX AND FM53.VER.01.02.XX