

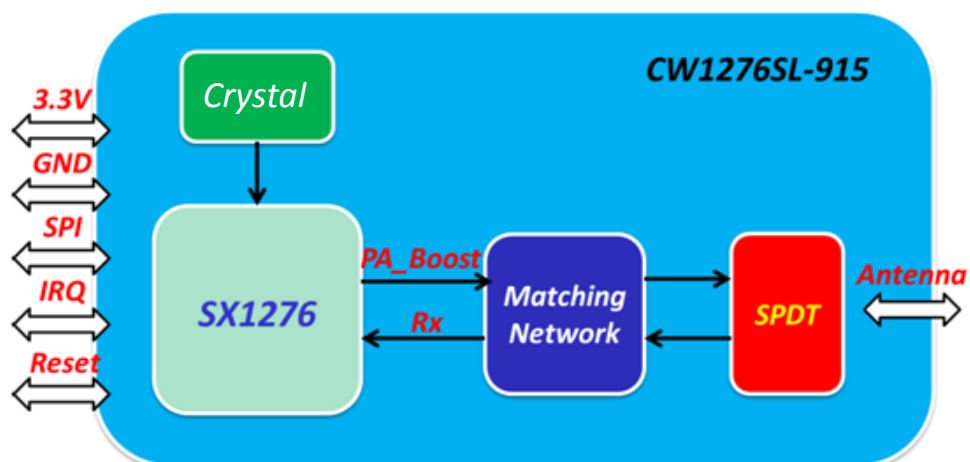
CW1276SL-915

Product Brief

FEATURE

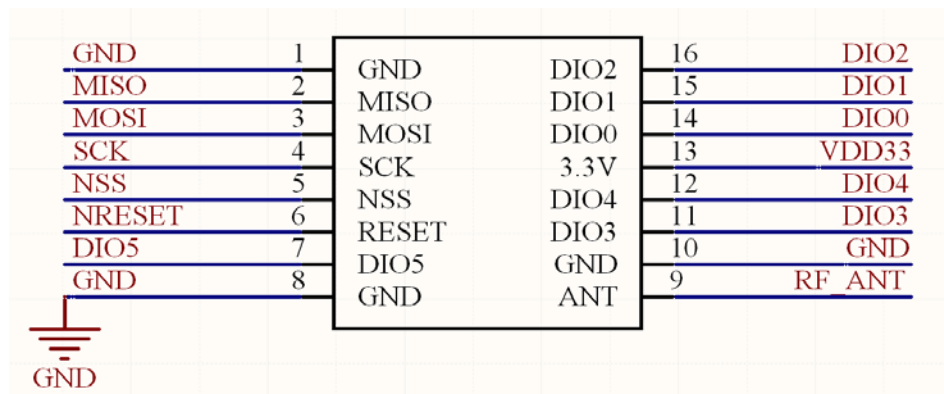
- Chipset: Semtech SX1276
- Small footprint : 16 mm x 16 mm x 1.75 mm
- LoRa Modem
- +20 dBm constant RF output vs. V supply
- Programmable bit rate up to 300 kbps
- High sensitivity: down to -137 dBm
- Excellent blocking immunity
- Automatic RF Sense and CAD with ultra-fast AFC
- FSK, GFSK, MSK, GMSK, LoRa and OOK modulation
- Packet engine up to 256 bytes with CRC
- Built-in temperature sensor and low battery indicator

CW1276SL-915 Block Diagram

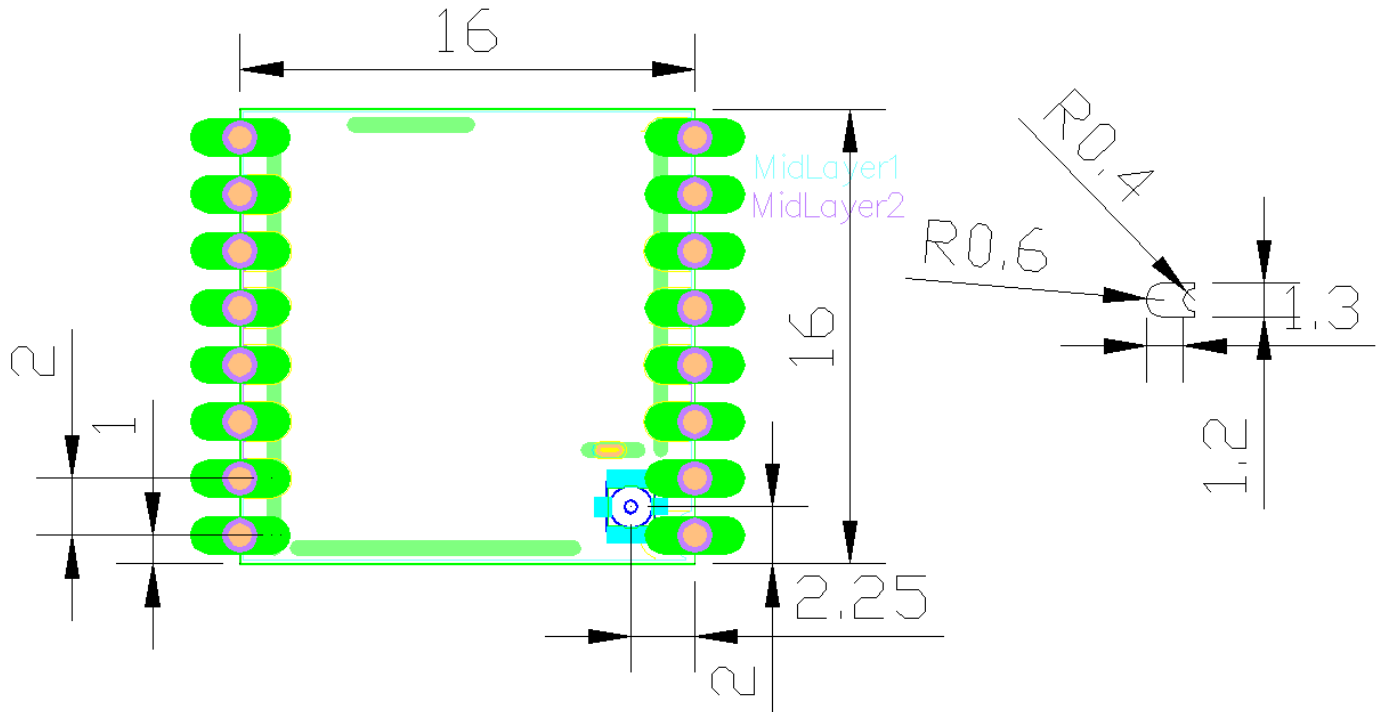


Technical Specification	
Model Name	CW1276SL-915
Product Description	LoRa Transceiver Module
Network Standard	Suitable PHY for LoRaWAN
Package	Stamp type
Host Interface	SPI / IRQs
Dimension	16 mm x 16 mm x 1.75 mm
Operation Conditions	
Operating Voltage	■ 3.3V
Temperature	■ Storage : -50°C ~ +105°C
	■ Operating : -20°C ~ +70°C
Humidity	■ Operating : 10 ~ 95% (Non-Condensing)
	■ Storage : 5 ~ 95% (Non-Condensing)
Electrical Specifications	
Frequency	EU868 / US915
Band Width	62.5~500KHz
Tx Power	+20dBm max.
Sensitivity	Down to -137dBm

CW1276SL-915 PIN Definition



CW1276SL-915 Mechanical Dimension



TOP View