

Mounting Clip for Cinterion BG2 module

GTT P/N : GT-BG2-CLIP

V1 Release 29th/Sep 2010

PCB Mounting Clip Design for Cinterion Wireless Module : BG2

enquiries@gtteurope.co.uk ; www.gtteurope.co.uk

FEATURES AND APPLICATION

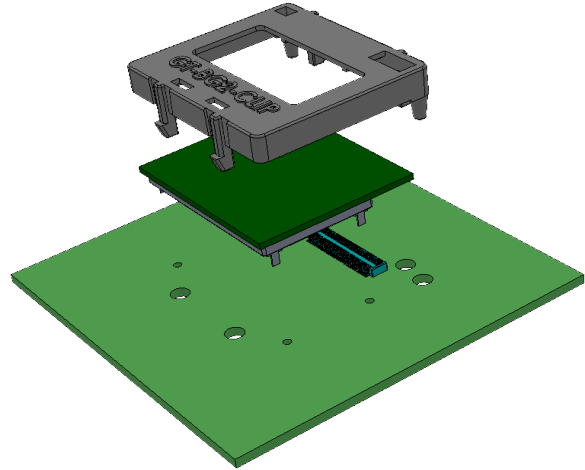
Board to Board connector information

Cinterion module board side connector by Molex : 54102-0604
 PCB mating board side connector by Molex : 53885-0608
 Size : 60 pins
 Stacking height : 2.5mm

PCB mating board thickness : 1.6mm
 Pulling force (Module Clip on PCB) : Minimum 10N
 Maximum 150N

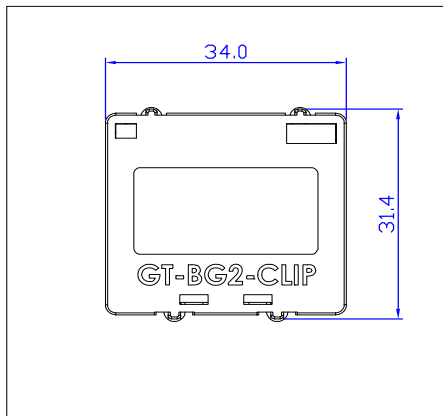
Reference information

Packaging information : TBD

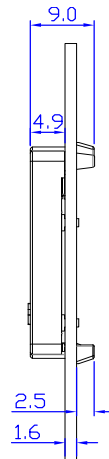


CLIP SPECIFICATIONS

Physical

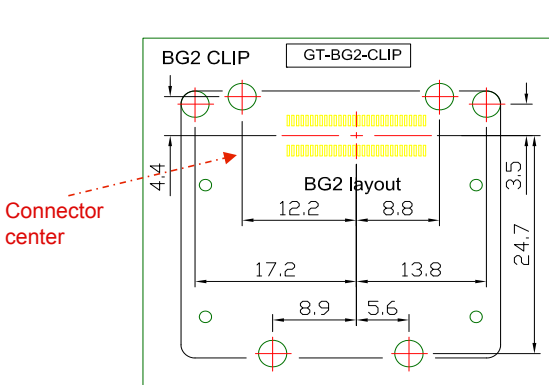


Assembled dimensions (in millimeters)

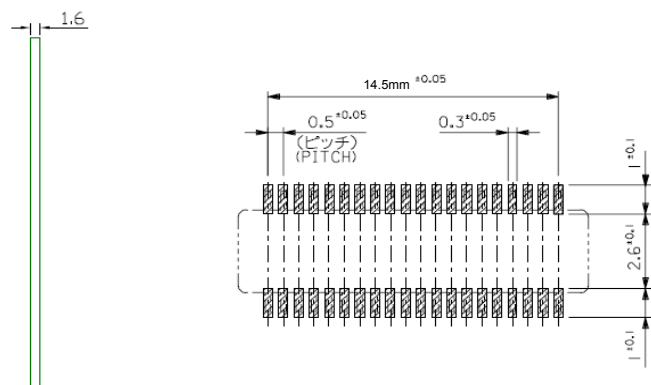


Stacking height
2.5mm

MODULE CLIP PCB FOOTPRINT AND CONNECTOR RECEPTACLE DIMENSIONS



Module Clip PCB Footprint



PCB Connector Receptacle dimensions

Mounting Clip for Cinterion BG2 module

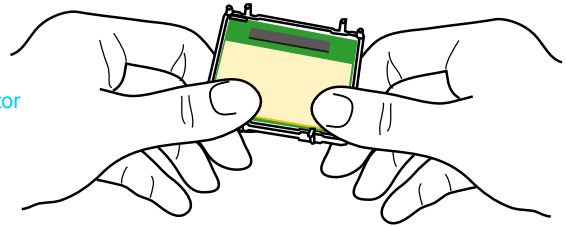
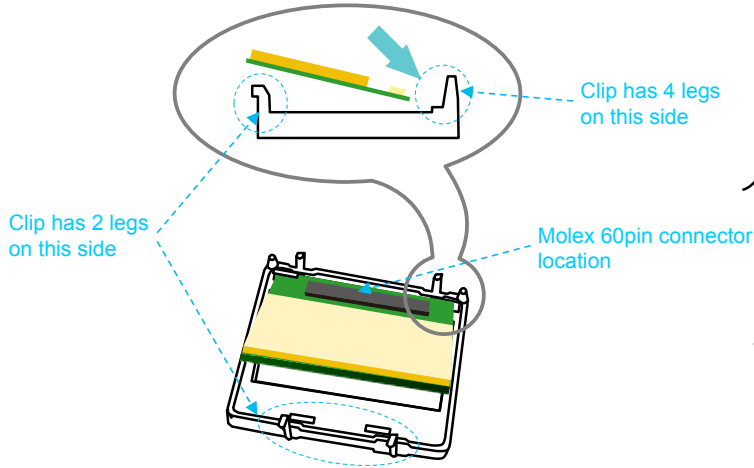
GTT P/N : GT-BG2-CLIP

V1 Release 29th/Sep 2010

PCB Mounting Clip Design for Cinterion Wireless Module : BG2

enquiries@gtteurope.co.uk ; www.gtteurope.co.uk

MOUNTING INSTRUCTIONS (Module into Clip)



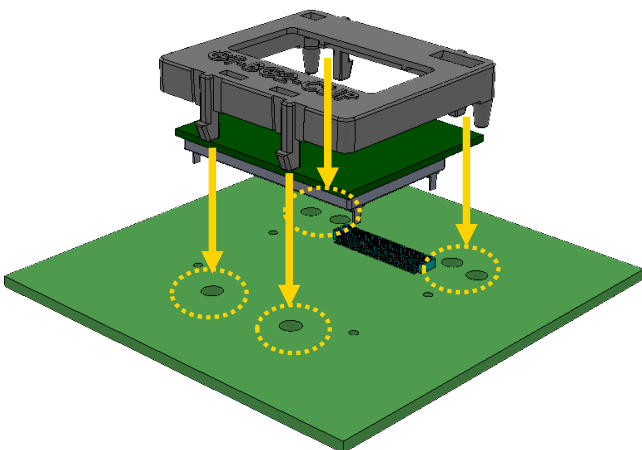
1st STEP :

Find correct matching orientation : the side with a Molex 60pin connector is the side which goes into the Clip first .
Then insert the Module at an inclined angle , sliding the edge of the PCB below the two retaining lugs of the Clip .

2nd STEP :

Press the other side of the module vertically downwards to fit it into the Clip .

MOUNTING INSTRUCTIONS (Module+Clip into Circuit Board)



STEP :

Find correct matching orientation (Molex & 6 holes) .
Insert the 6 legs of the Clip into the corresponding holes on the PCB footprint . When hearing the click sound, it is mounted onto the PCB