

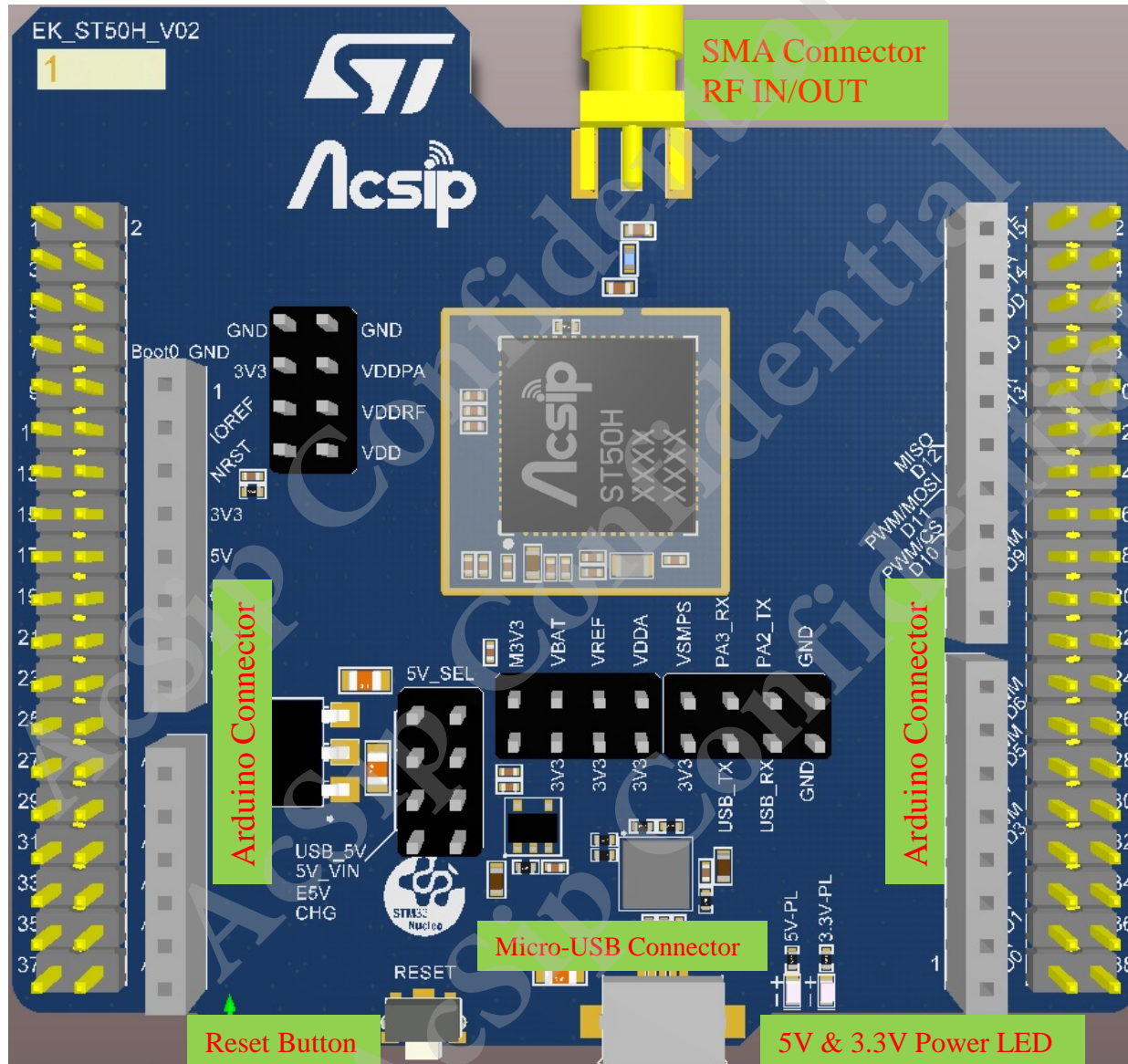
EK-ST50H User Guide



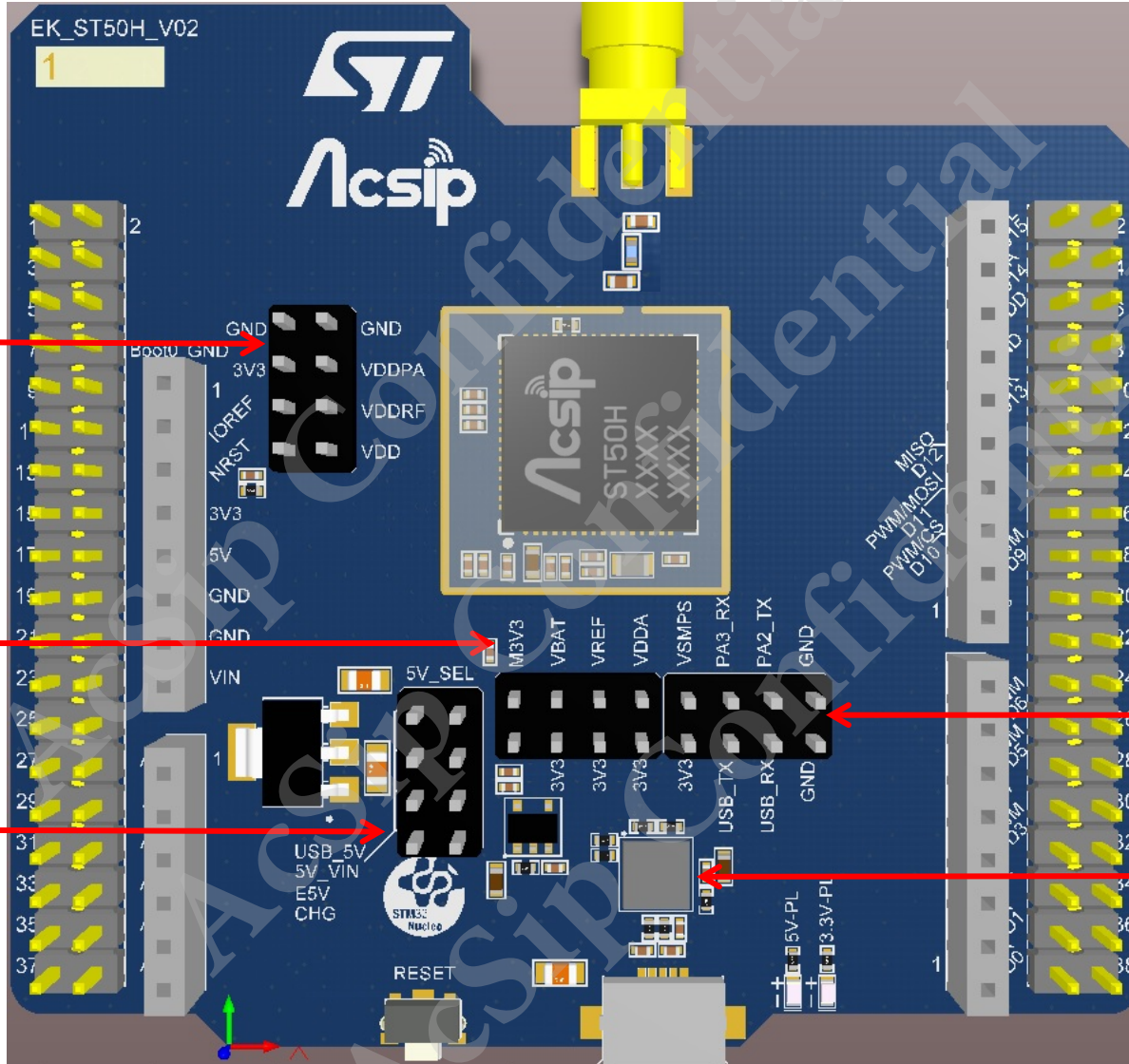
AcSiP Technology Corp.

www.acsip.com.tw

EK-ST50H PCB Connector Description



EK-ST50H PCB Connector Description



ST50H Power Supply Connector

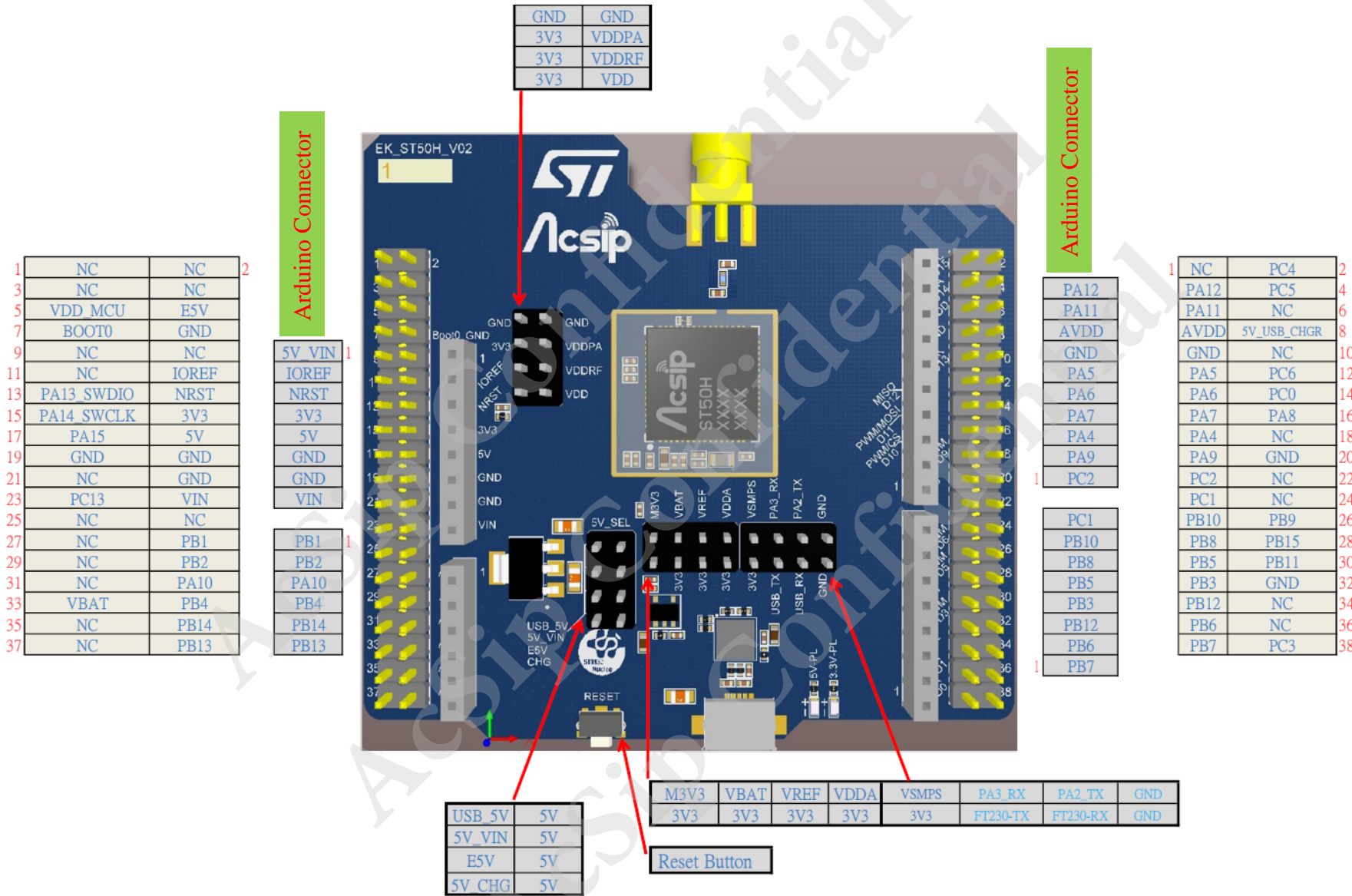
5V Power Input Selection Connector

UART Port Connector

FTDI Chip FT230XQ
USB to Basic UART

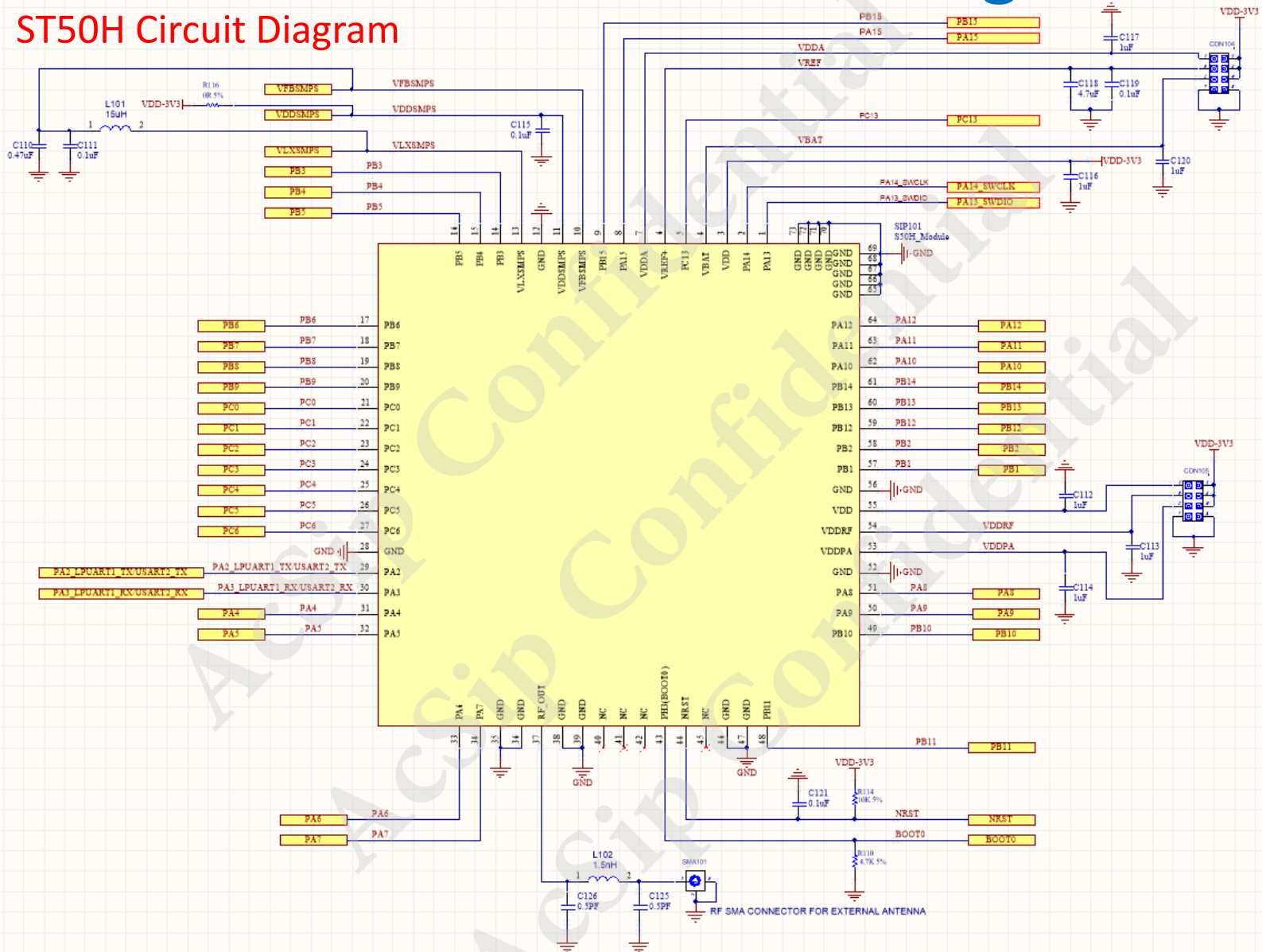
<https://www.ftdichip.com/Products/ICs/FT230X.html>

EK-ST50H PCB Connector Description



EK-ST50H Schematic Diagram

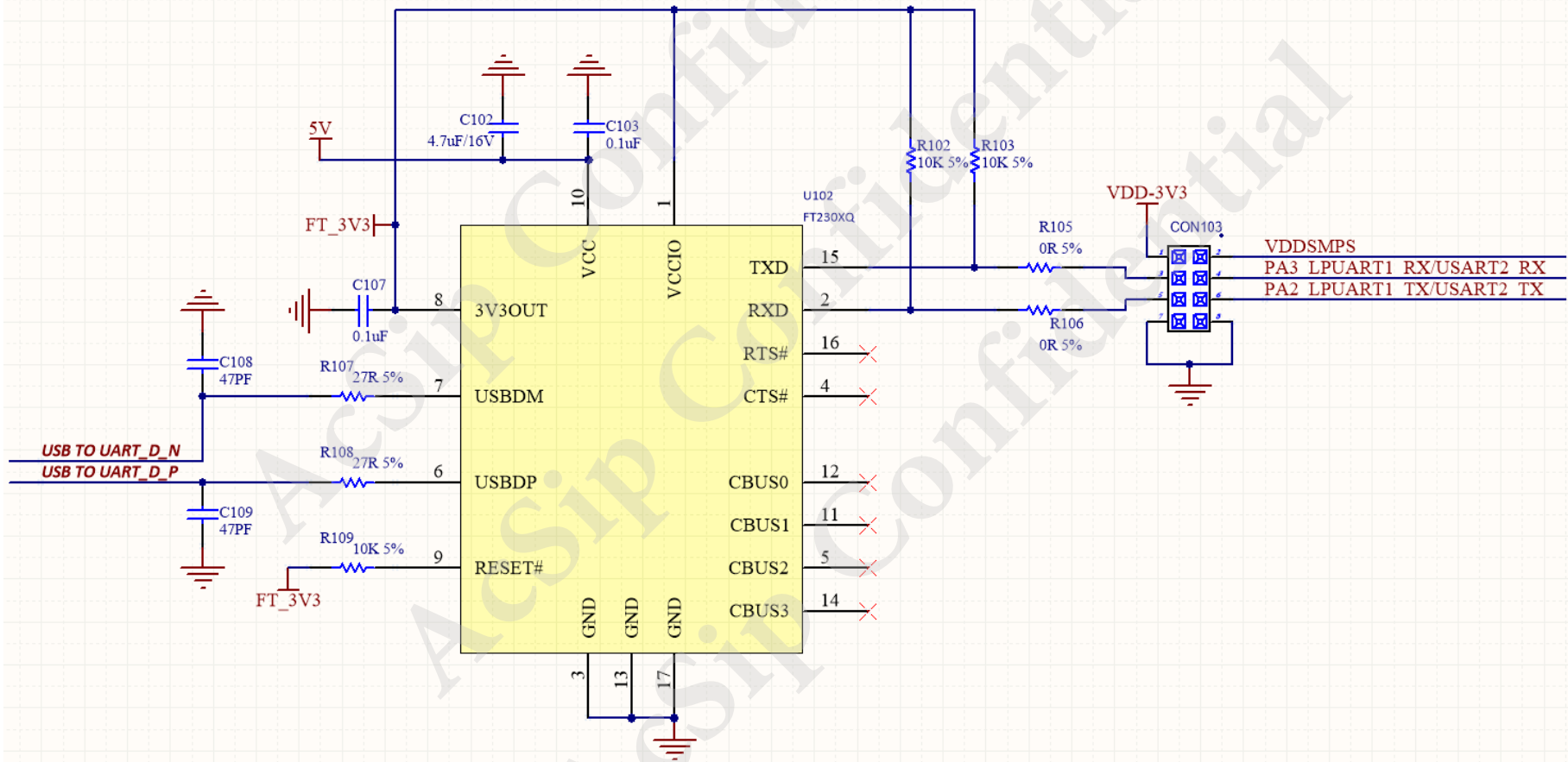
ST50H Circuit Diagram



EK-ST50H Schematic Diagram

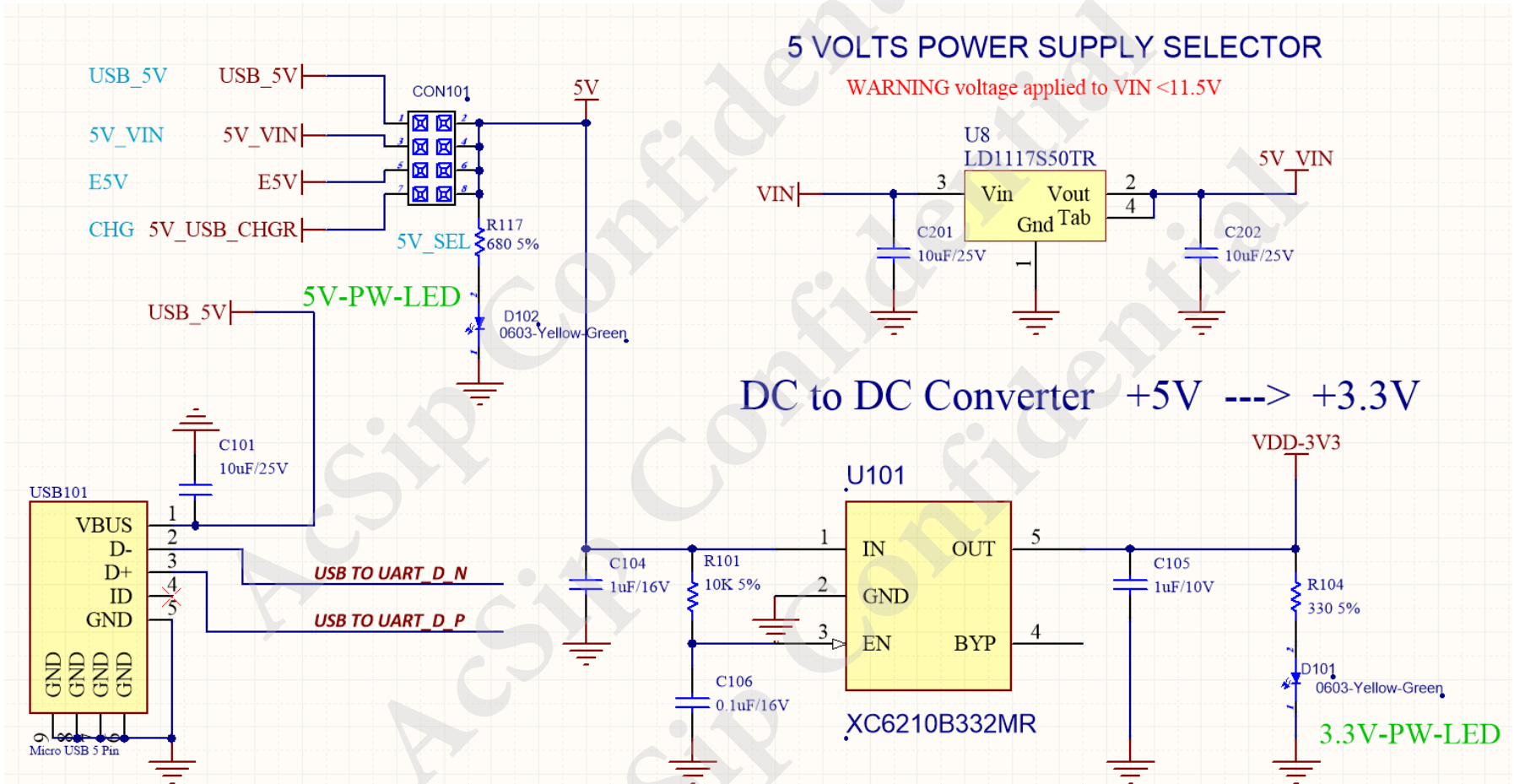
USB to UART Circuit Diagram

Uart to USB



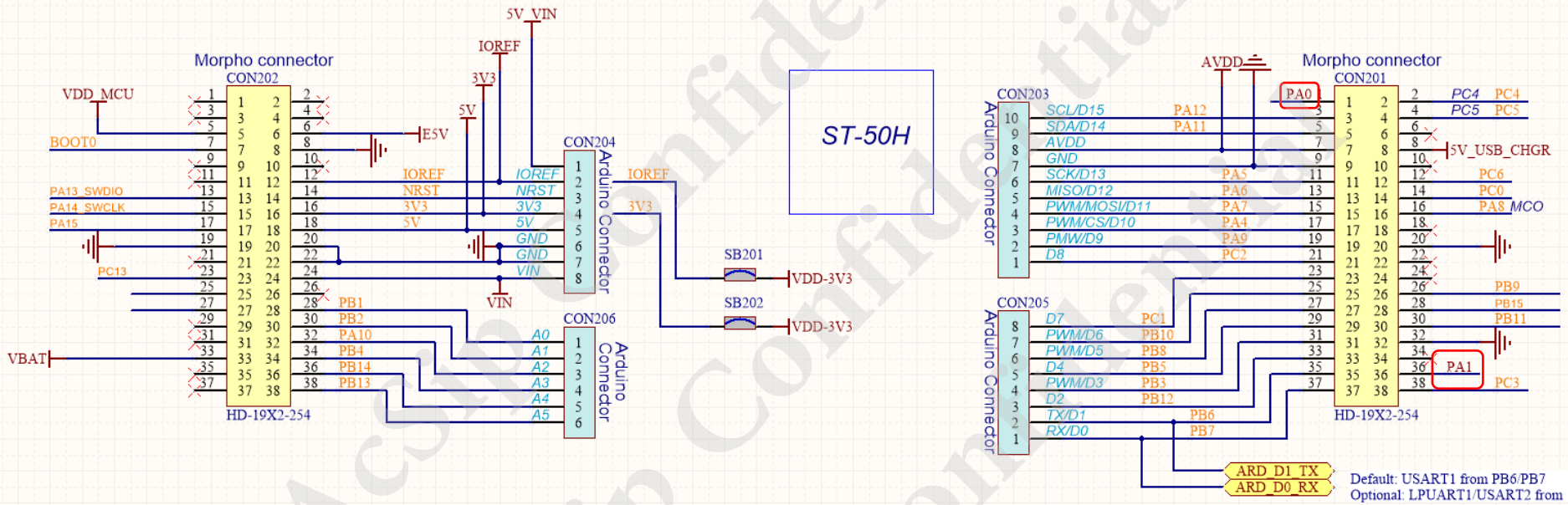
EK-ST50H Schematic Diagram

Power Supply Circuit Diagram



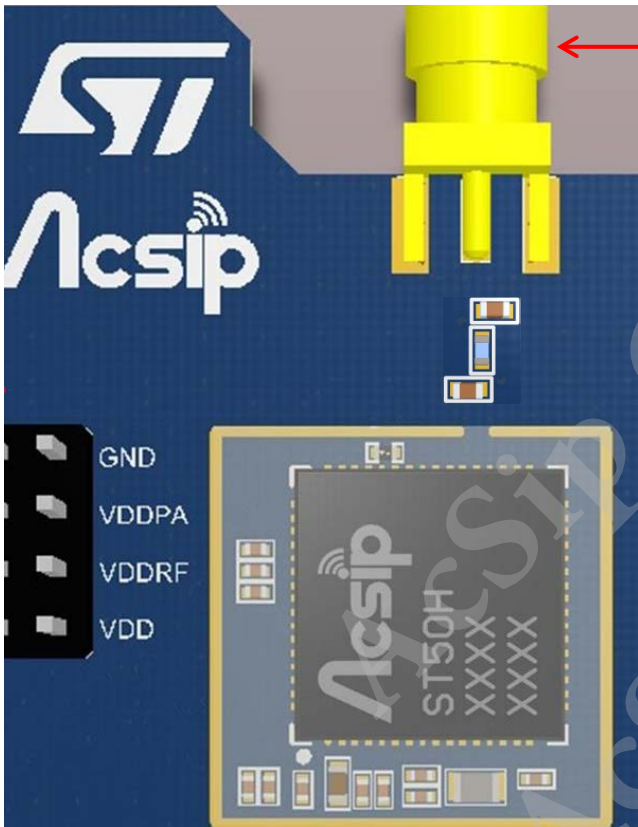
EK-ST50H Schematic Diagram

Pin definition Circuit Diagram



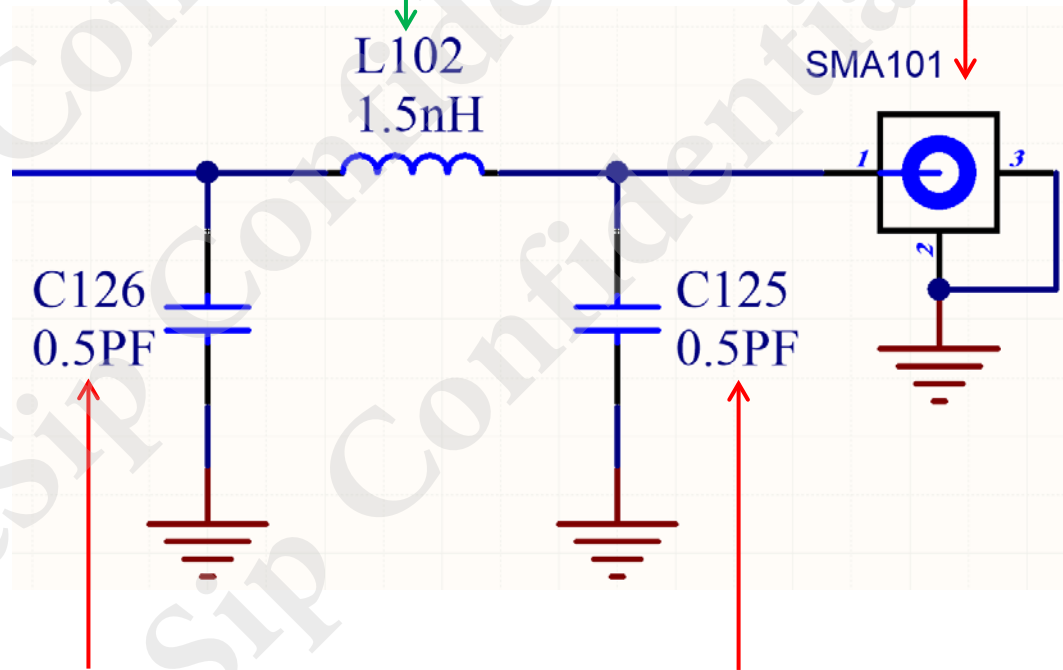
Note : The PA0 and PA1 pins in ST50H have been controlled by Acsip's software ,So these two pins on the PCB are NC pins.

Low-pass filter circuit for EMI test



RF SMA Connector for External Antenna

Inductor : Murata LQG15HS1N5S02D



Capacitor : Murata GRM1555C1HR50BA01D