



Industrial 5/6-Port Unmanaged Ethernet Switches

EH2005/EH2006

RoHS



- 4 x 10/100BaseT(X) (RJ45)
- 1 x fiber port with ST (-Fm model) or SC (-Fs model)
- Broadcast storm protection
- Support IEEE 802.3/ 802.3u/ 802.3x
- 10/100M, Full/Half-Duplex, MDI/MDI-X auto-detection
- Redundant dual DC power inputs
- Operating temperature ranges from 0~60°C
- Rugged high-strength plastic case
- DIN-Rail or wall mount support

EH

The EH Series include 5/6-port Ethernet switches that provide two solutions, one with 6 RJ-45 ports and the other with 4 RJ-45 ports and one optic ST/SC port for your industrial applications. These EH series have been designed for industrial environments, such as in hazardous locations that comply with FCC, TUV, UL, and CE standards.



EH2

EH series protect itself from receiving too many broadcast packets. During normal use, broadcast packets will be forwarded to all ports except the source port. However, EH series will discard broadcast or multicast packets if the number of those packets exceeds a threshold in a preset period of time. When the preset period expires (about 800ms), it will then resume receiving broadcast or multicast packets until the threshold is reached again.

EH series provide 2 redundant power inputs that can be connected simultaneously to wide-range DC power sources. If one of the power inputs fails, the other live source acts as a backup to provide the EH series' power needs automatically.

Industrial 5/6-Port Unmanaged Ethernet Switches

➔ EH2005-Fm/Fs / EH2006

Specifications

Ethernet

Transmission Rate	10/100Mbps
Total Port	5 / 6
10/100Mbps	5 / 6
Connector	RJ-45 x 4+ Fm/Fs x 1 (EH2005-Fm/Fs) / RJ-45 x 6 (EH2006)
Auto MDI/MDI-X	Yes

Power Input

Connector	DC 9 ~ 30V
Consumption	3-pin 5.08mm pitch terminal block x 2

Environment

Operating	5.4Watts Max
Storage	0°C ~ 60°C (32° ~ 140°F)

Dimension

W x H x D	-20° ~ 70°C (-4°~ 185°F), 5 ~ 95%RH
-----------	---------------------------------------

MTBF(Hour)

Preceding	45mm x 90mm x 80mm
-----------	--------------------

	107296(EH2005-Fm/Fs) / 112092(EH2006)
--	---------------------------------------

1P1EH2005FM001G

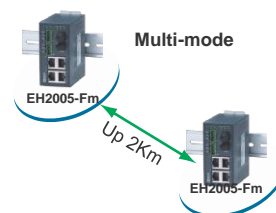
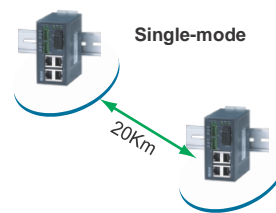
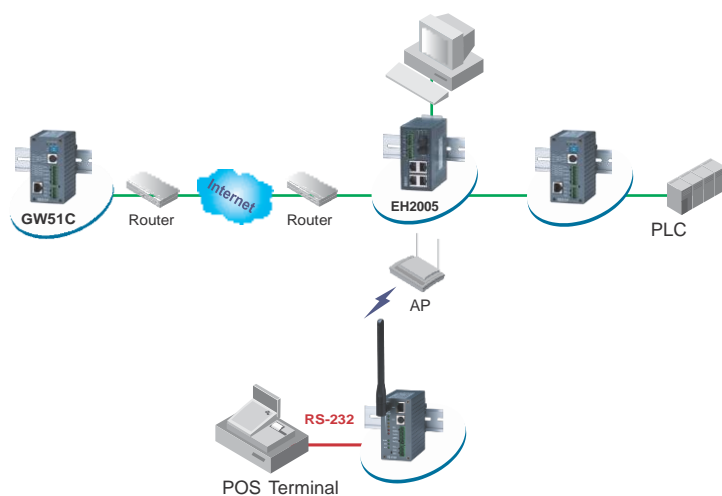
EH2005-Fm	Industrial 5-port Unmanaged Ethernet Switch with
1P1EH2005FS001G	4x 10/100TX & 1x 10/100FX, multi-mode
EH2005-Fs	Industrial 5-port Unmanaged Ethernet Switch with
1P1EH200600001G	4x 10/100TX & 1x 10/100FX Single-mode
EH2006	Industrial 6-port Unmanaged Ethernet Switch with 6x 10/100TX

Optional Accessories

Power Adapter

US315-12(US / EU):

AC100~240V/DC12V 5.08mm pitch Terminal block



ЕвроМобайл – эксклюзивный дистрибьютор Атоп в России, Украине и СНГ

ЕвроМобайл Россия

Санкт-Петербург, пр. Энгельса, д. 71, оф. 313
8 800 555 75 76, +7 (812) 331-75-76
www.euromobile.ru
info@euroml.ru

ЕвроМобайл Украина

Запорожье, ул. Георгия Сапожника, д. 14, оф. 4
+380 (61) 213-41-77
www.euromobile.com.ua
info@euroml.com.ua

ЕвроМобайл Беларусь

www.euromobile.by
info@euroml.by