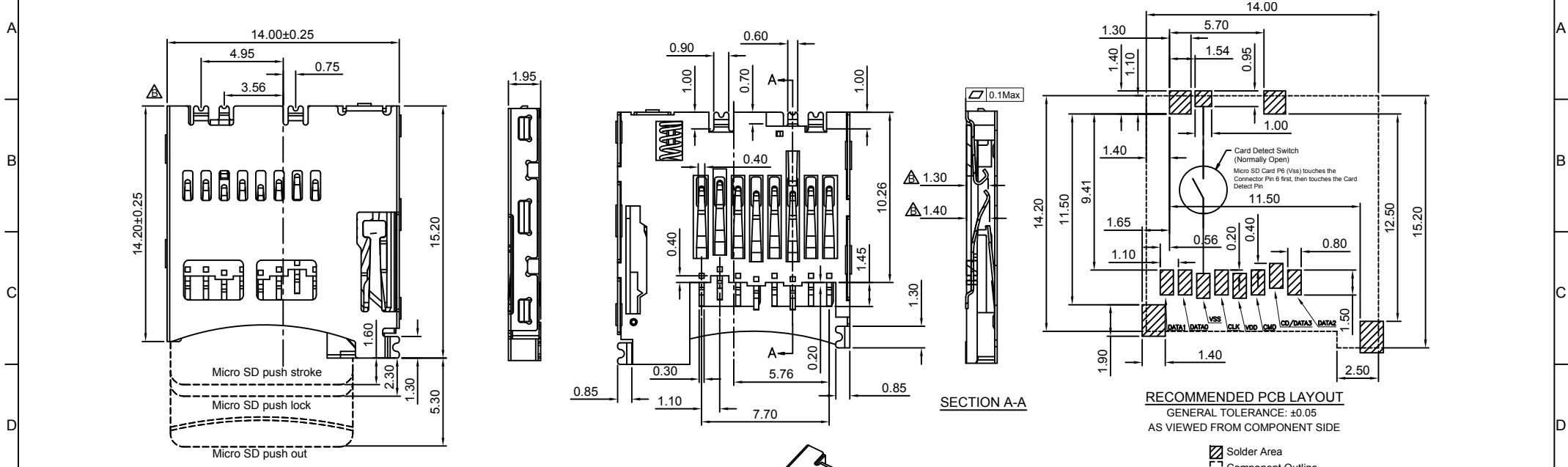
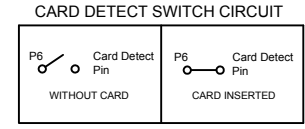
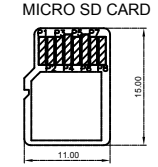


Global Connector Technology Ltd. - MEM2051: Micro SD Memory Card Connector, Push-Push, SMT, Card Entry Normal, 1.95mm Profile



RECOMMENDED PCB LAYOUT
GENERAL TOLERANCE: ±0.05
AS VIEWED FROM COMPONENT SIDE

Solder Area
 Component Outline



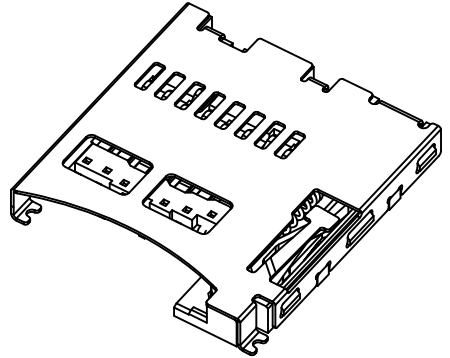
SPECIFICATION 规格:

MATERIAL 物料规格:
 PLASTIC HOUSING 塑胶外壳: LCP 液晶高分子
 CONTACT TERMINAL 接触端子: PHOSPHOR BRONZE 磷青铜
 METALLIC SHELL 金属外壳: STAINLESS STEEL 不锈钢

PLATING 电镀规格:
 CONTACT TERMINAL & CARD DETECT SWITCH 接触端子部分电镀 & 卡侦测端子:
 UNDER-PLATING 底层电镀: 50μ" NICKEL ALL OVER 全部镀镍50μ"
 CONTACT AREA 接触部分: GOLD FLASH 镀闪金
 SOLDERING AREA 焊接部分: 80μ" MIN. MATT TIN 雾锡
 METALLIC SHELL 金属外壳电镀:
 UNDER-PLATING 底层电镀: 50μ" NICKEL ALL OVER 全部镀镍50μ"
 SOLDERING AREA 焊接部分: GOLD FLASH 镀闪金

ELECTRICAL 电气规格:
 VOLTAGE RATING 电压额定值: 100 VAC MAX
 CURRENT RATING 电流额定值: 0.5 A MAX.
 OPERATING TEMPERATURE 工作温度: -25°C TO +85°C
 CONTACT RESISTANCE 接触电阻值: 100mΩ MAX.
 INSULATION RESISTANCE 绝缘电阻值: 1000MΩ MIN
 DIELECTRIC WITHSTANDING VOLTAGE 耐电压: 500VAC

MECHANICAL 机械性规格:
 DURABILITY 耐久性: 5000 CYCLES 5000 次插拔



Ordering Grid

MEM2051 - 00 - 195 - 00 - A

Switch: 00 = Normally Open

Locating Post: 00 = Without

Packing Options: A = Tape & Reel (1000 per Reel)

REQUEST SAMPLES AND QUOTATION

MICRO SD CARD PIN OUT		
Pin	Name	Description
P1	DAT2	Data Bit 2
P2	CD/DAT3	Card Detect/Data Bit 3
P3	CMD	Command Line
P4	VDD	Supply Voltage 2.7v/3.6v
P5	CLK	Clock
P6	VSS	Ground
P7	DAT0	Data Bit 0
P8	DAT1	Data Bit 1

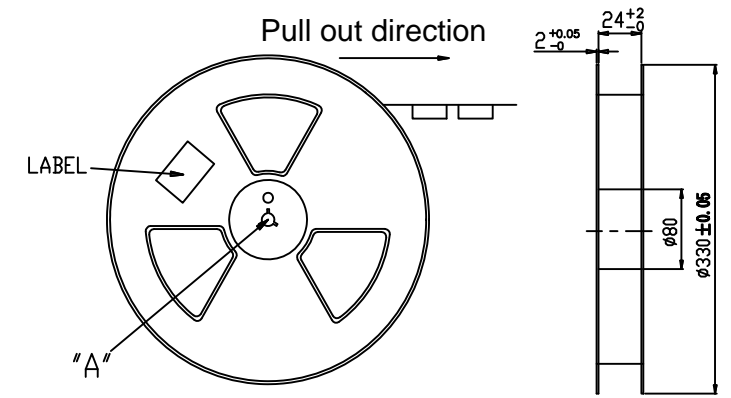
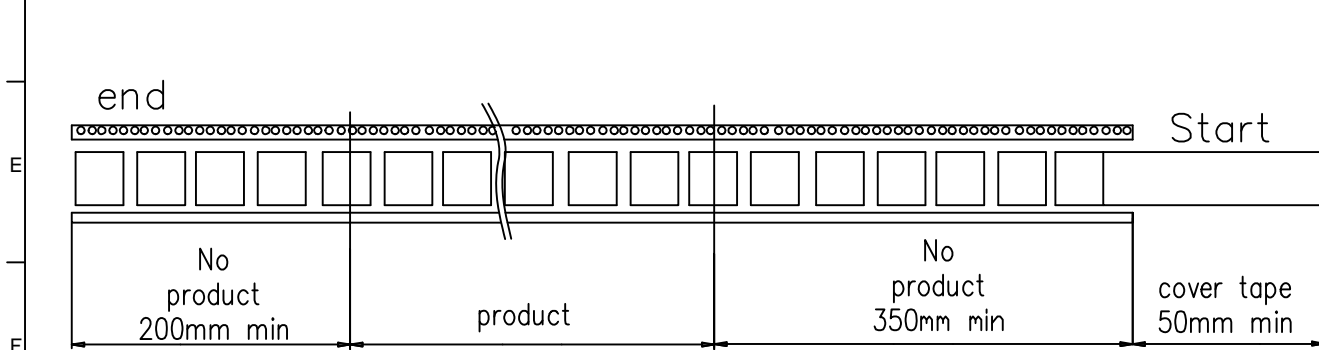
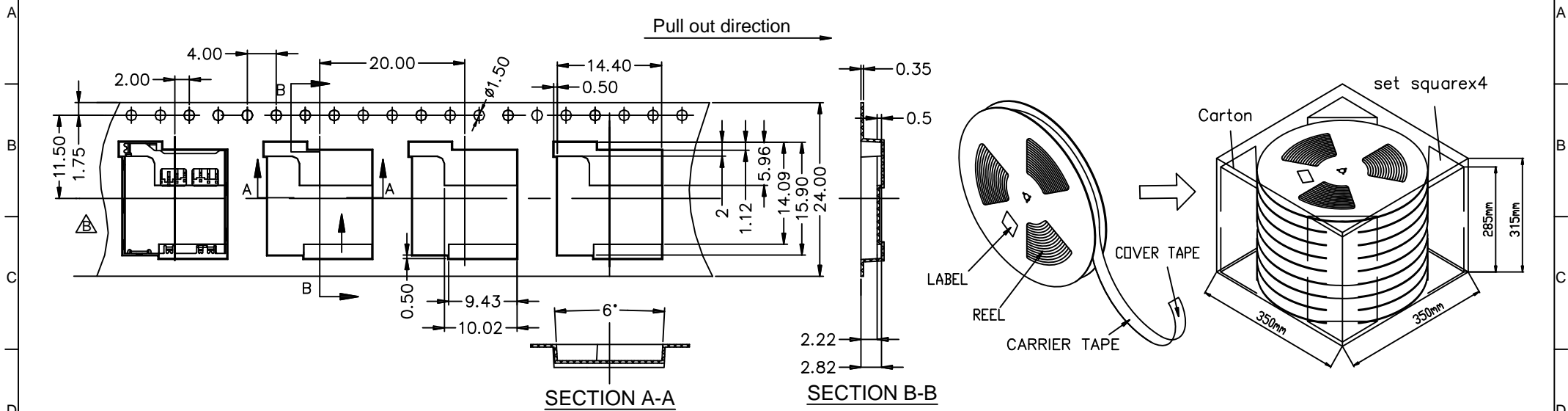
By	ASE	AJO
DETAIL	DRAWING RELEASE	PCN MEM2051-001
REV DATE	A 14/11/11	B 11/09/13



Tolerances (Except as noted)	Part Number:- MEM2051	Date:- 02 NOV 11
Dimensions in mm	Description:- MICRO SD MEMORY CARD CONNECTOR, PUSH-PUSH, SMT, CARD ENTRY NORMAL, 1.95mm PROFILE	
X.X ±0.35	X." ±1"	
X.XX ±0.25	X.X" ±0.5"	
X.XXX ±0.150	X.XX" ±0.25"	
Third Angle Projection	THIS DRAWING IS CONFIDENTIAL AND MUST NOT BE COPIED OR DISCLOSED WITHOUT WRITTEN CONSENT	

GCT
www.gct.co

Scale NTS	Revision B	Material See Note	Drawn by ASE	Sheet No. E & OE 1/2
-----------	------------	-------------------	--------------	----------------------



Gross Weight - Reel: 0.86 KG
Quantity: 1000 pcs/Reel

Notes 注意:

1. Primary Packing: 1,000 pcs/reel 第一重包装: 1000件 / 卷筒
2. Secondary Packing: 10 reel/carton (10k pieces/carton)
第二重包装: 10个卷筒 / 纸箱 (即10000件 / 纸箱)
3. Gross Weight: 9.43Kg/carton

By	ASE	AJO
DETAIL	DRAWING RELEASE	PCN MEM2051-001
REV DATE	A 14/11/11	B 11/09/13



Tolerances (Except as noted)	Part Number:- MEM2051	Date:- 02 NOV 11
Dimensions in mm	Description:- MICRO SD MEMORY CARD CONNECTOR, PUSH-PUSH, SMT, CARD ENTRY NORMAL, 1.95mm PROFILE	
© THIS DRAWING IS CONFIDENTIAL AND MUST NOT BE COPIED OR DISCLOSED WITHOUT WRITTEN CONSENT		

Scale NTS	Revision B	Material See Note	Drawn by ASE	Sheet No. E & OE 2/2
-----------	------------	-------------------	--------------	----------------------

GCT
www.gct.co