



EnGenius Solutions

AP MeshCam

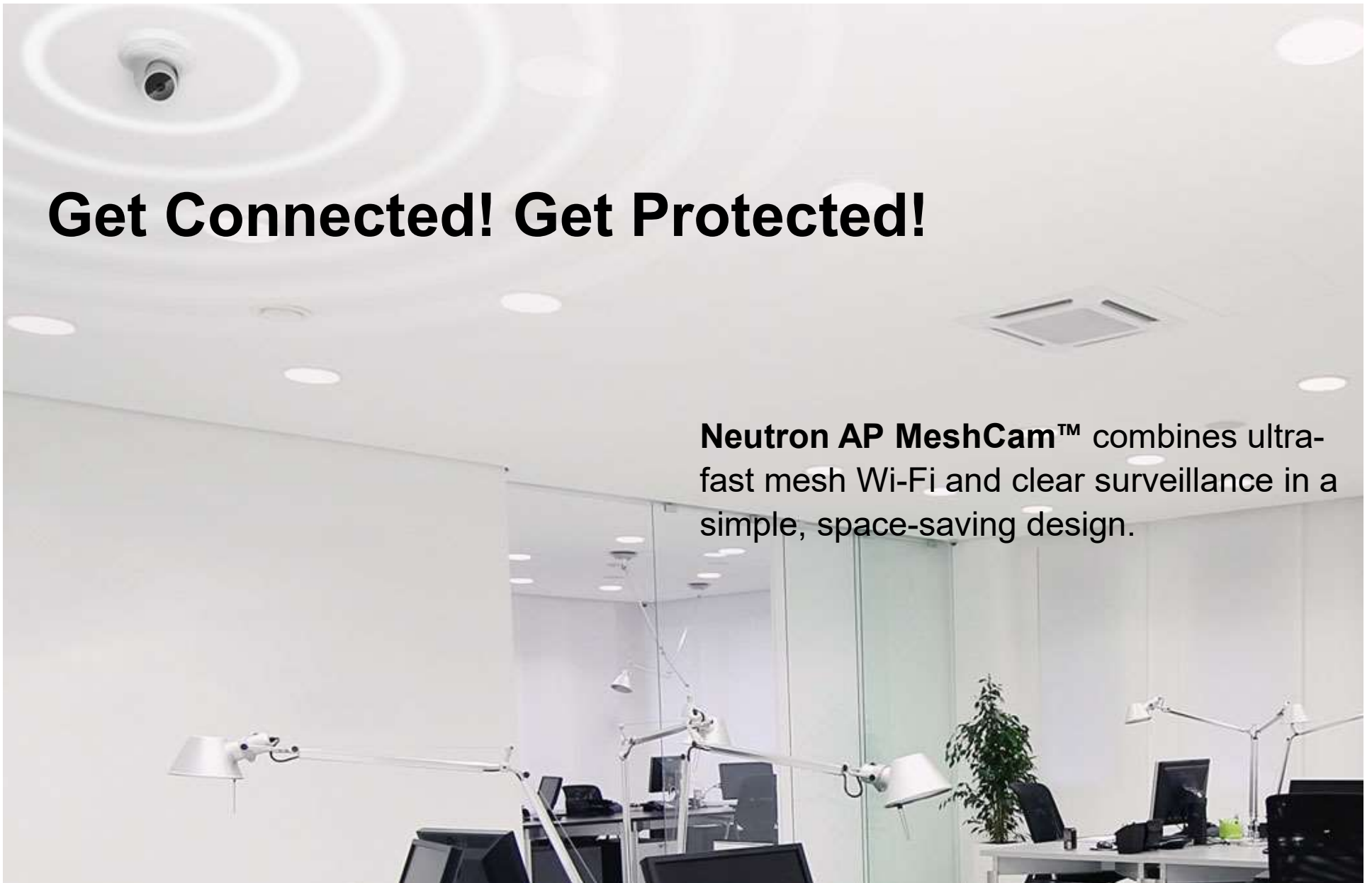
3/30/2017

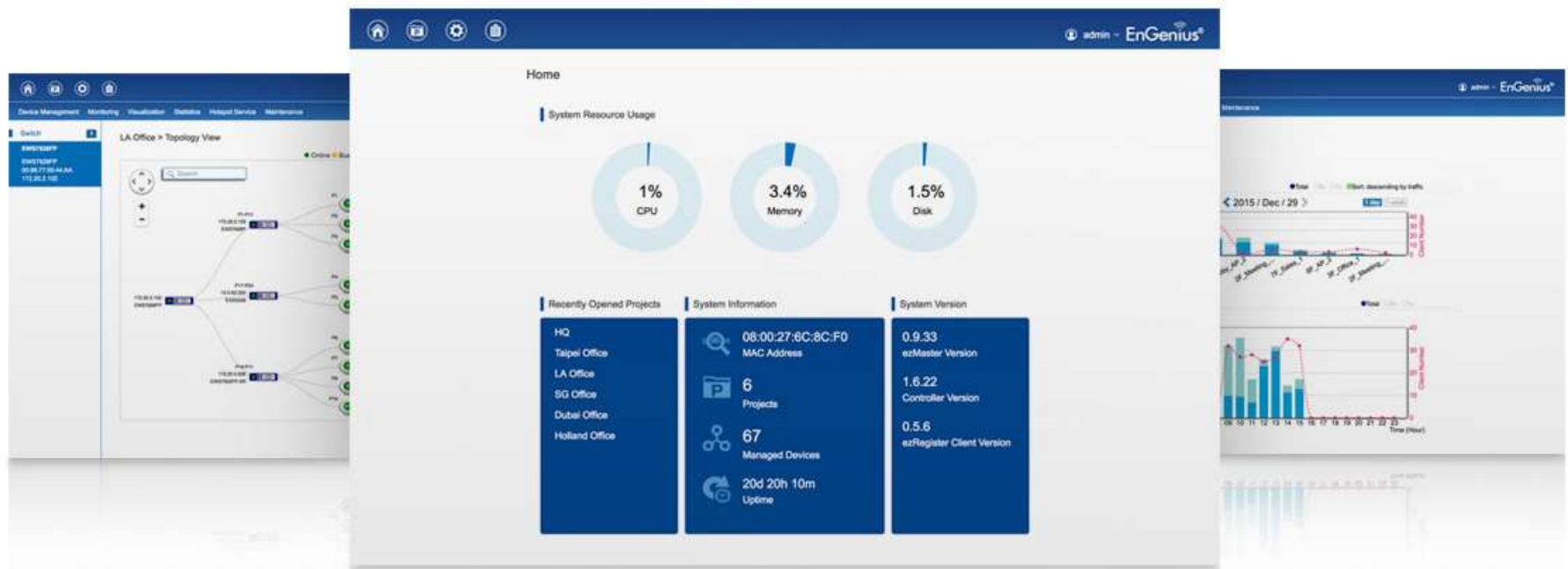


1. AP MeshCam Overview
2. Industries, Applications & Successes
3. Questions

Get Connected! Get Protected!

Neutron AP MeshCam™ combines ultra-fast mesh Wi-Fi and clear surveillance in a simple, space-saving design.





L2 PoE or Non PoE Switches



Managed Access Points



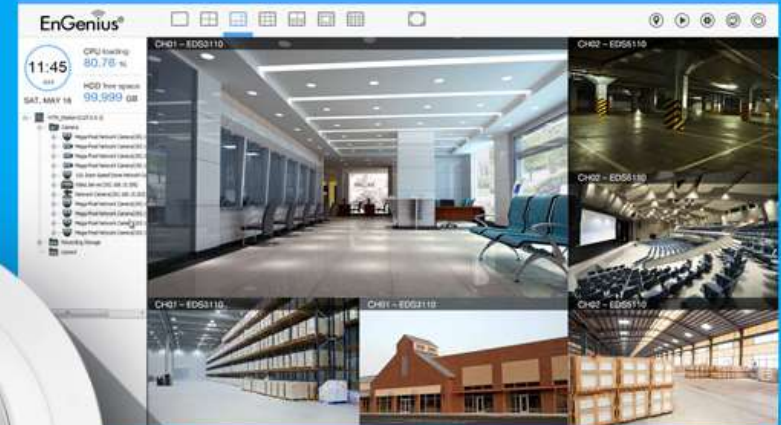
ezMaster™ Network Management Software

Cover Every Corner

Always-there Wi-Fi and **security** is the future. Eliminate dead zones, even in the farthest corners and keep your eye on what matters most.

HD

120°



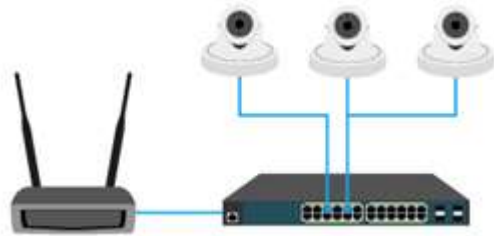
Cover Every Corner

Always-there **Wi-Fi** and security is the future. Eliminate dead zones, even in the farthest corners and keep your eye on what matters most.

11AC



Centrally Managed



Meshing



Client Bridge



Access Point / Client Bridge

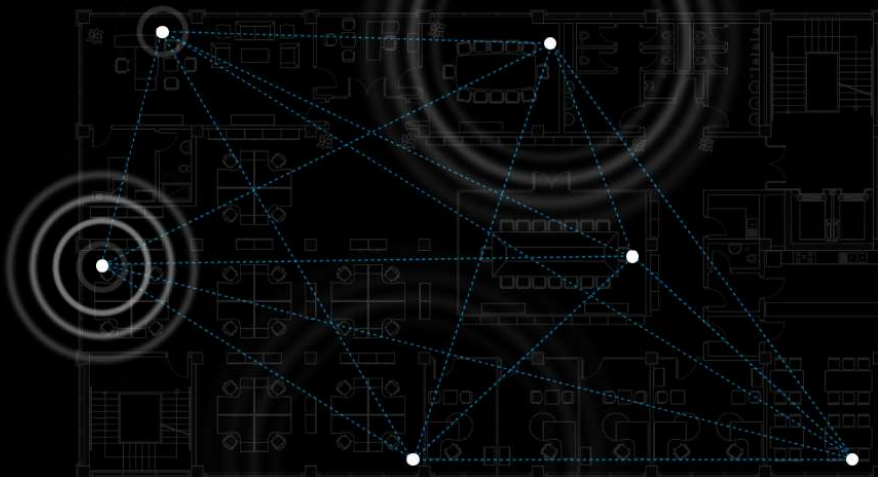


Standalone



Simplified Solution

We make it simple. One space-saving system forges powerful wireless mesh with crystal clear video for quick, expandable access and visibility regardless of interior size. Mesh's smart-sensing technology simplifies setup, optimizes signals and self-heals should it ever lose connection.

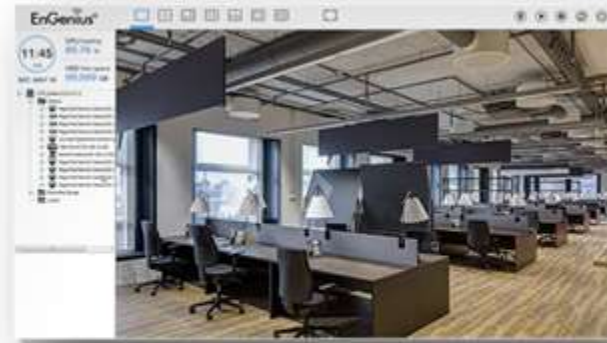


Whole-Space Assurance

Secure what's important to you.

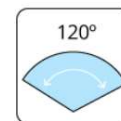
View suspicious activities day and night and set motion or audio-triggered recordings and get email alerts at the first hint of trouble.

- Get Widespread Visibility
- Set Motion & Audio-Triggered Recordings & Receive Email Alerts
- View & Record Suspicious Activity With Night Visibility to 65 Ft.
- Wide, 120° 2-MP Lens Captures HD Images Over a Broader Field
- Includes 16-Channel VM Software With Live Monitoring
- EnVMS Mobile App for Access from Anywhere
- ONVIF Compliant



Sleek and Compact Dome Design

Offer an innovative design that blends into any environment



120° Wide-Angle Lens



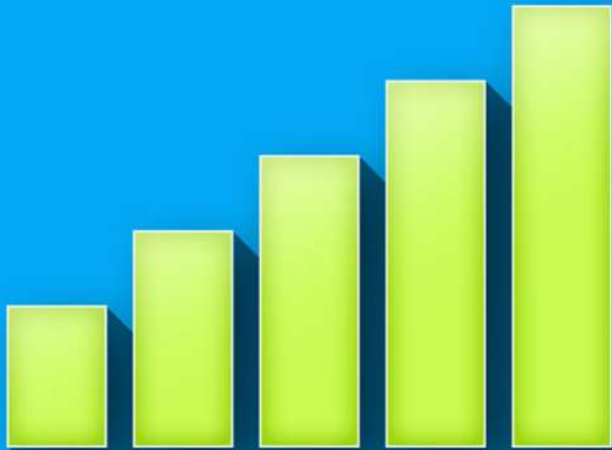
Night Vision (smart IR)



802.3af PoE



Speed! Speed! Speed!



Sprint to Your Next Destination

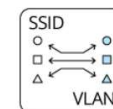
Stop the buffering madness!
Get smoking-fast 11ac Wi-Fi
and smooth, buffer-free 4K
Ultra HD video streaming for
your enjoyment.

- Fast 11ac Speeds to 867 Mbps for Smooth, Buffer-Free Connections
- Eliminate Wi-Fi Dead Zones
- Dual-Band Improves Performance, Expands Capacity
- Built-in internal high performance antennas for low profile design
- Mesh Smart-Sensing Simplifies Installation & Optimizes Connect
- 802.3at/af-Compliant PoE Supports Flexible Device Placement
- Operate as a Stand-Alone or Expand to Centrally Manage



Far Beyond an IP Camera, Built-In 11AC
Access Point

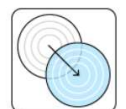
Built-in AP comes with business-grade functionalities



Per SSID VLAN

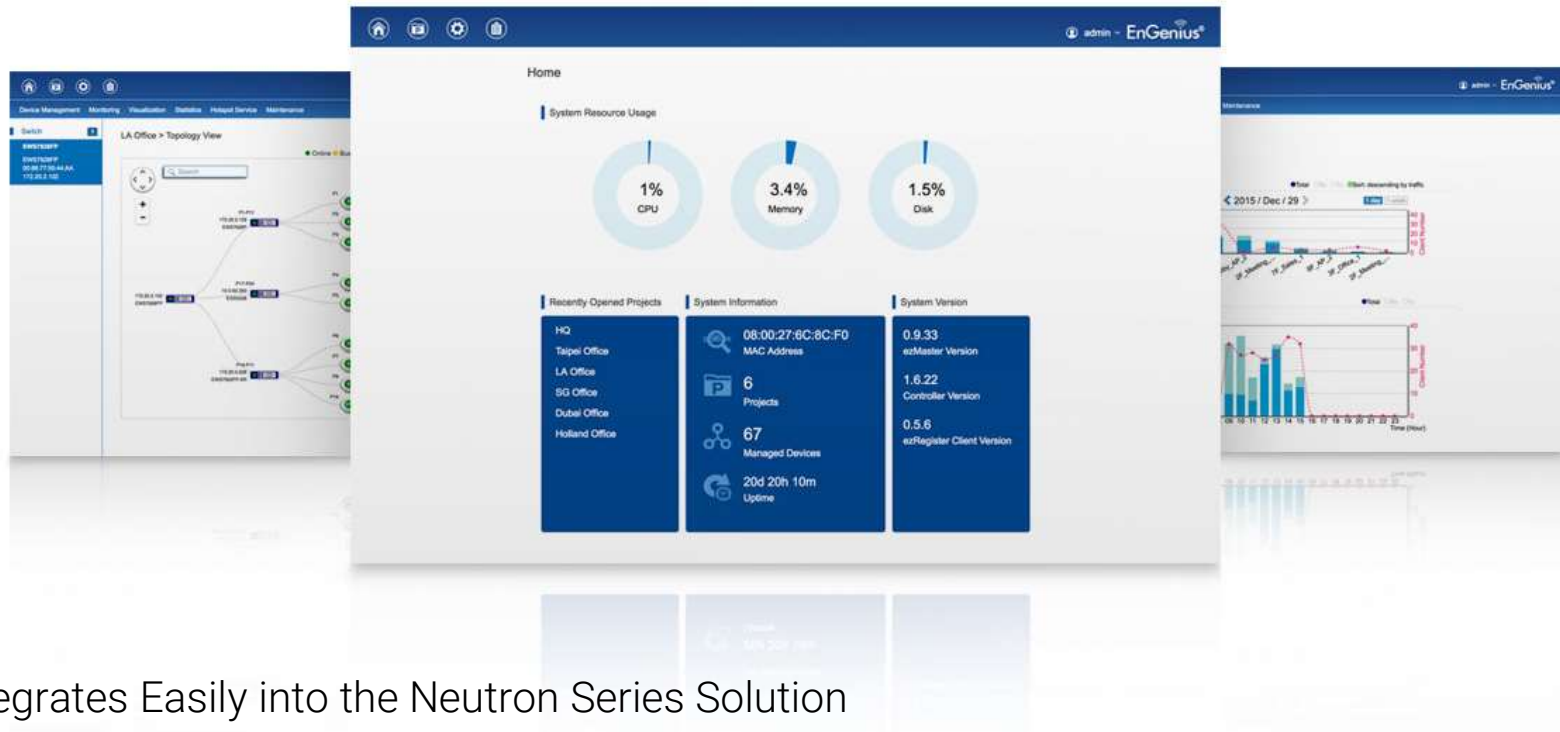


Band Steering

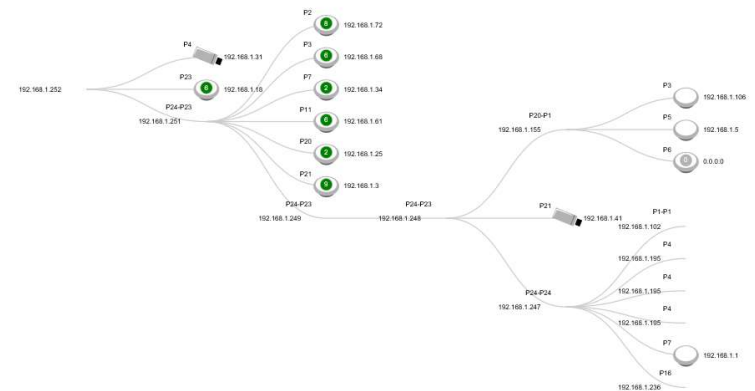


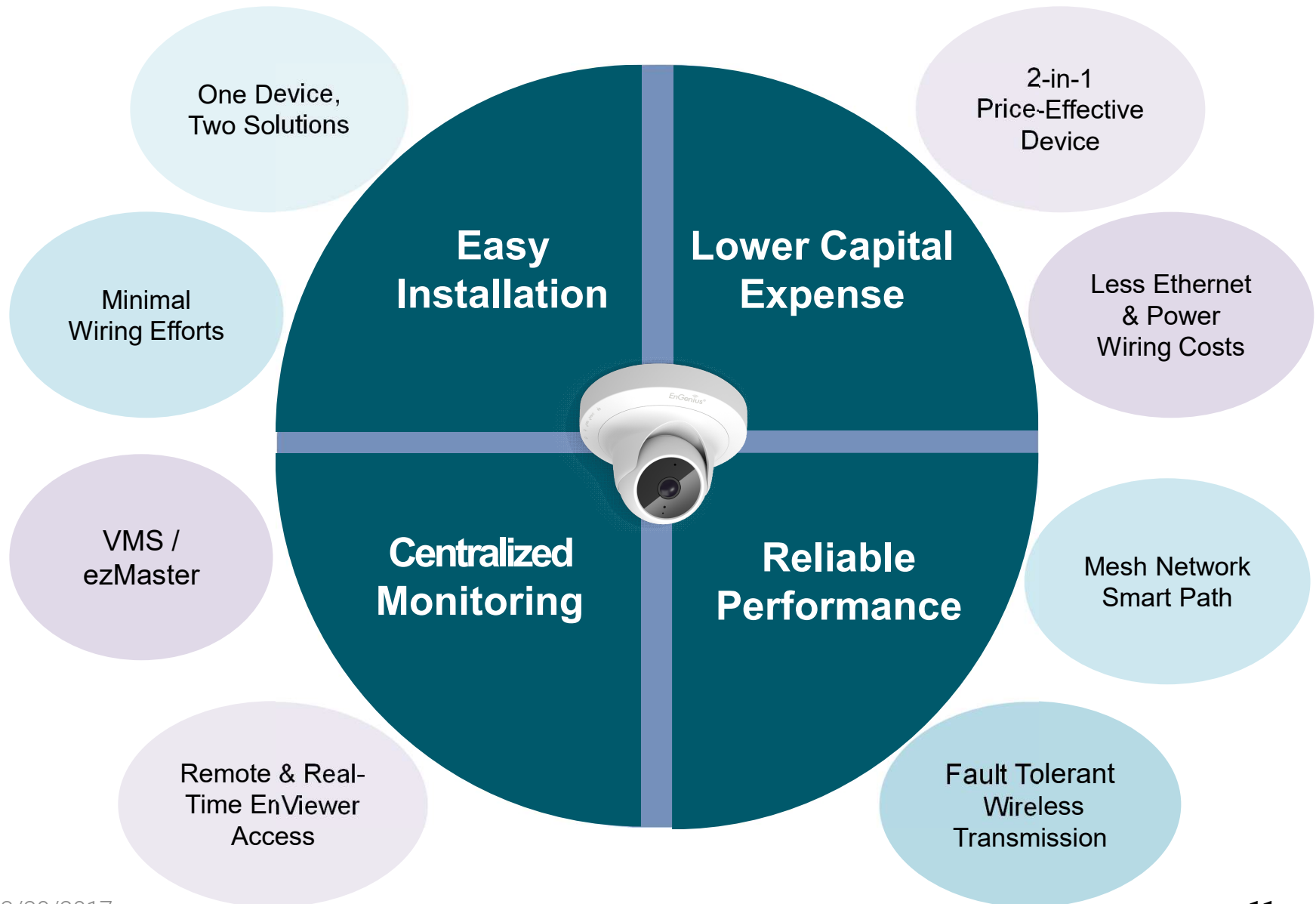
Fast Roaming

Autonomous or Centralized

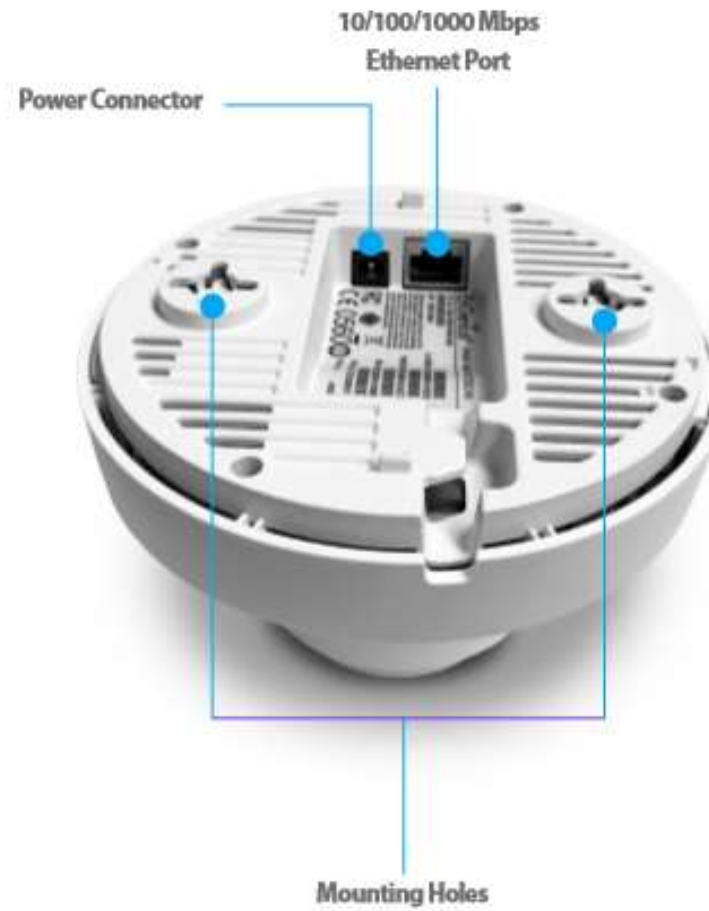


- Integrates Easily into the Neutron Series Solution
- AP MeshCam will Mesh with Other Neutron Access Points
- Centrally Manage via Neutron Switches and/or ezMaster
- Add, Configure & Troubleshoot Multiple Units from One Dashboard





EWS1025CAM



EnGenius®

AP MeshCam

MSRP
\$475.00



Get Connected. Get Protected.
Surveillance Built on Mesh Wi-Fi

NOW AVAILABLE

PN: EWS1025CAM



AP MeshCam

Industries, Applications & Successes

3/30/2017





Education, Financial Institutions, Multi-Dwelling Unit, Professional A/V, Transportation, Managed Service Providers, Manufacturing, Real Estate, Hospitality, Healthcare, Industrial/Commercial, Retail, Residential, Venues/Stadiums, Arts/Entertainment





Education -Primary, Secondary, Private,
Universities

MDU's -Student Housing, Apartment
Complex, Condos

Professional A/V -Commercial

Hospitality -Cafes, Restaurants, Bars,
Hotels, Motels, Inns, Resorts

Healthcare -Assisted Living

Real Estate -Property Management

Arts/Entertainment

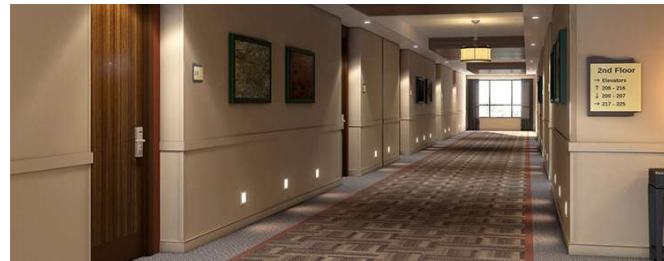
Residential



Bar Area



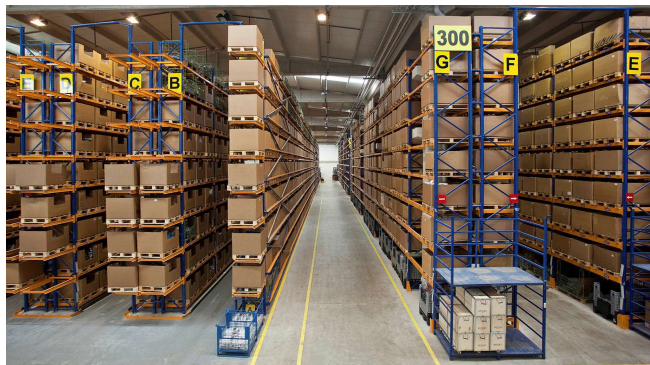
Hotel Corridors



Small Retail



Warehouse



Restaurant Hostess/Register



Bar Register



School Auditoriums



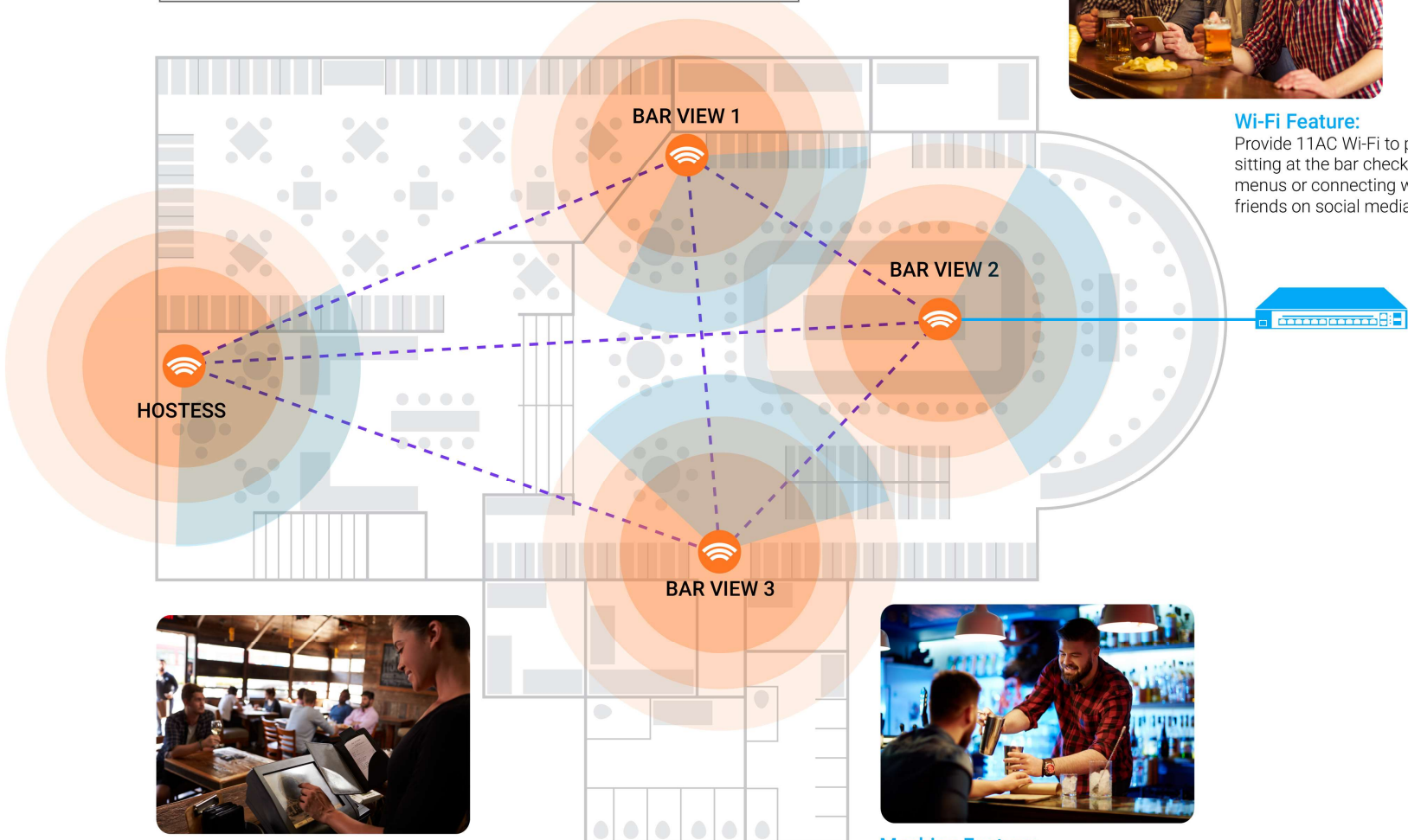
School Hallways



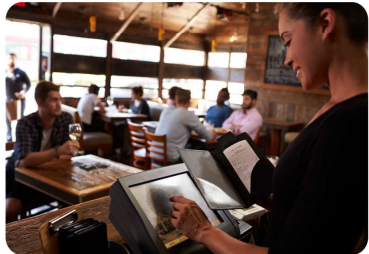
Small & Large Lobbies



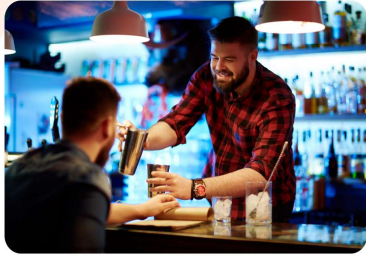
Bar/Restaurant



Wi-Fi Feature:
Provide 11AC Wi-Fi to patrons sitting at the bar checking online menus or connecting with friends on social media.

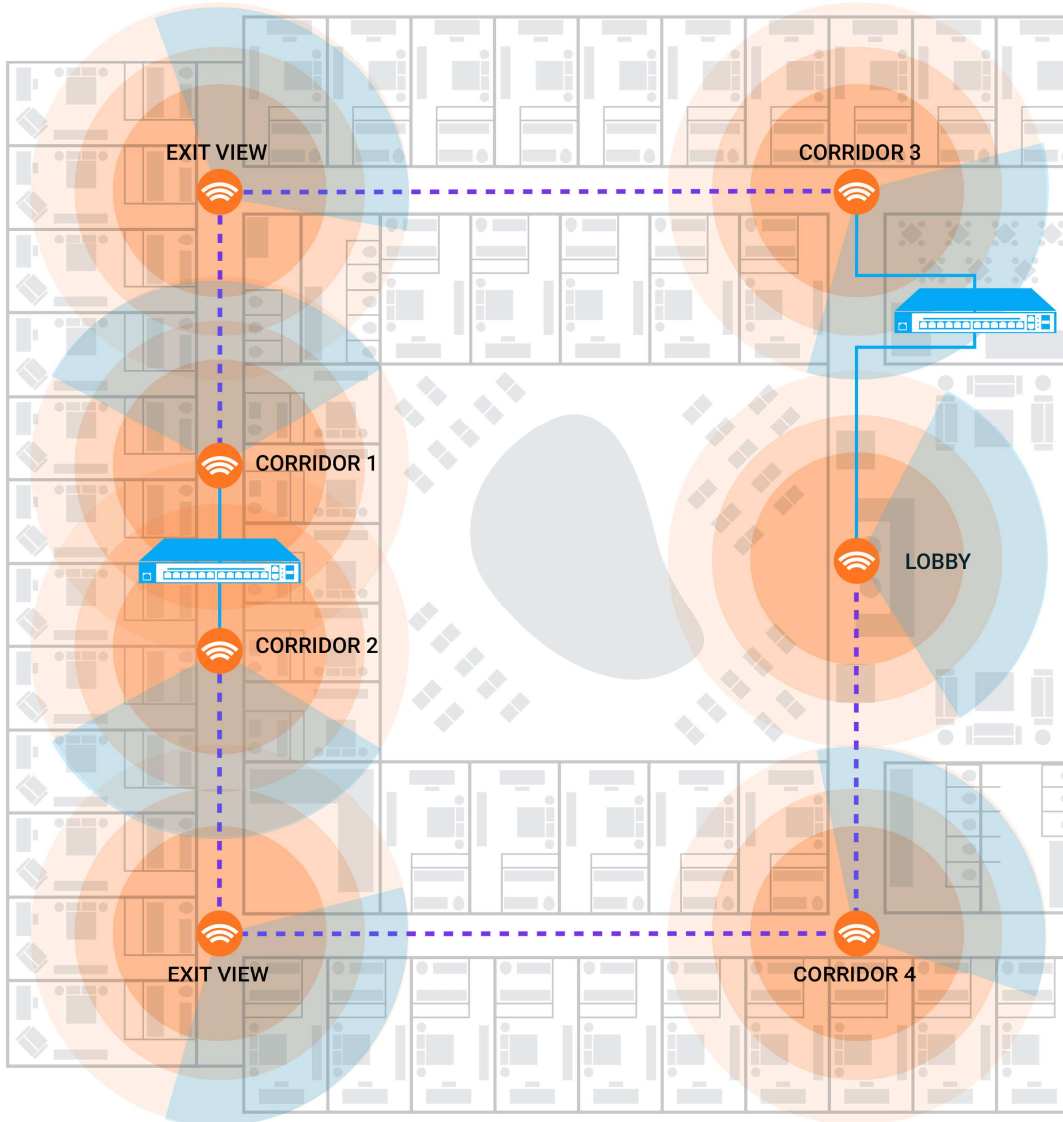


Surveillance Feature:
Locally or remotely oversee cash registers, bartender's tip jar and monitor overpouring frequencies and customer interactions.



Meshing Feature:
Provide visibility and Wi-Fi by connecting multiple AP MeshCams in all parts of the restaurant, bar area and hostess station without running additional cabling.

Hotel/Hospitality



Wi-Fi Feature:

Provide 11ac Wi-Fi to patrons in lobby & corridor areas for online check-ins or check-outs, flight status or Taxi ride services.



Surveillance Feature:

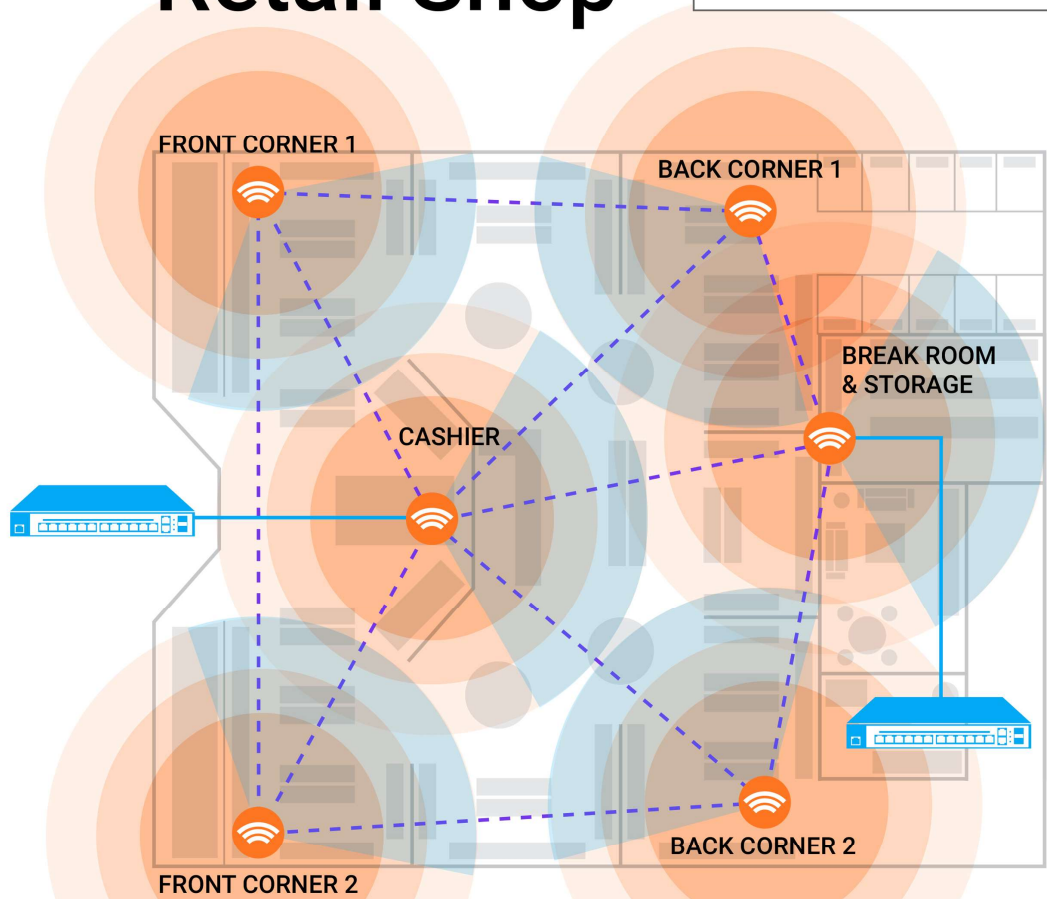
Keep an eye on lobby activity, check-in and check-out processes, cash registers and corridor security checks.



Meshing Feature

Provide visibility and Wi-Fi with multiple AP MeshCams connected with one another in corridors without running additional Ethernet cabling.

Retail Shop



Meshing Feature:
Provide visibility and Wi-Fi by connecting multiple AP MeshCams in all parts of the store without running additional cables.

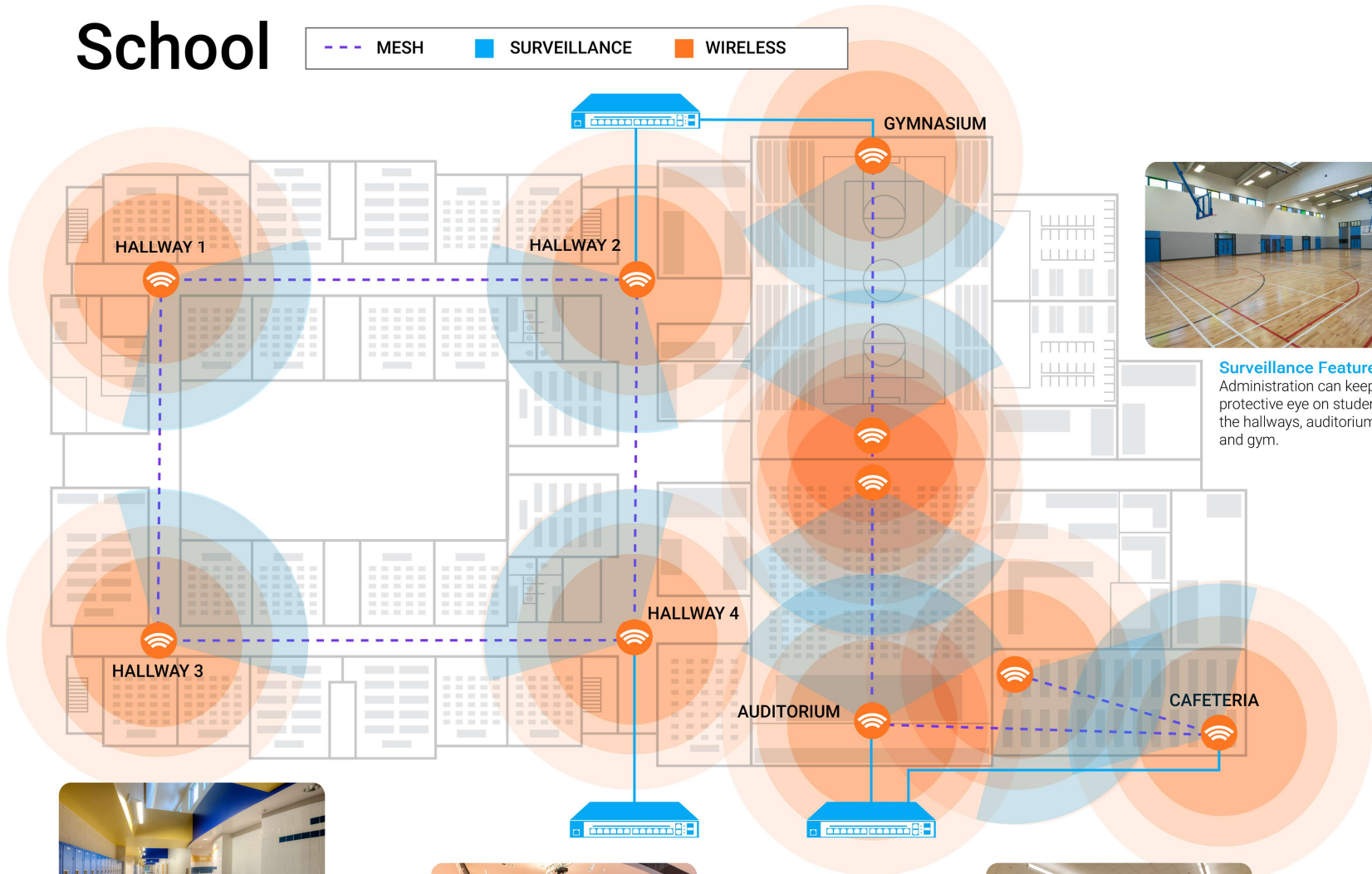


Wi-Fi Feature:
Offer 11ac Wi-Fi access to staff and patrons throughout the store.



Surveillance Feature:
Keep an eye on store activity, registers, drink station and the front door.

School



Surveillance Feature:
Administration can keep a protective eye on students in the hallways, auditoriums and gym.



Wi-Fi Feature:
Provide 11ac Wi-Fi in the hallways, auditorium and office for accessing online curriculum or school news and services.



Meshing Feature:
Provide visibility and Wi-Fi by connecting multiple AP MeshCams throughout the school saving cost on running cable to those hard to reach places.





Candlewood Suites | St. Louis, MO

[Neutron Series - Indoor Wi-Fi at the Hotel O'Fallon](#)

"We're really, really happy with the product. . . There have been absolutely no complaints."

Dennis Miller, Owner, Cierra Digital Communications



Cedar Hill Continuing Care Community | Windsor, VT

[DuraFon 1X - Long-Range Phones Crucial for Assisted Living](#)

"Overall, they have been wonderful... It was easy; I just followed the instructions. I had no difficulty with it... It solved our problems."

Earl Knight, Director of Maintenance and Life Safety



Lima Christian School | Lima, NY

[Neutron Series - Easy-to-Use Wi-Fi in a K-12 School](#)

"The competitor's products were not user-friendly . . . whereas the EnGenius system was almost stupid easy."

Jerry Thompson, Network Administrator



M.I.T. Consulting | Toronto, Canada

[Neutron Series - Performance & Range at an Affordable Price](#)

"EnGenius has started something pretty impressive with the Neutron Series."

Erez Zevulunov, Director and Founding Partner



Montgomery Technologies | San Francisco, CA

[Neutron Series - Scalable Wi-Fi for a Range of Clients](#)

"EnGenius has really helped us when we have questions or concerns."

Greg Jones, President

Hospitality - "We're really, really happy with the product. . . There have been absolutely no complaints."

Education - "The competitor's products were not user-friendly . . . whereas the EnGenius system was almost stupid easy."

PRO A/V - "The reliability and performance of an enterprise-class wireless networking solution at a lower price point."



MSRP \$475
NOW Available

Get Connected. Get Protected.

Surveillance Built on Mesh Wi-Fi

AP MeshCam™ eliminates dead zones and unsecure areas by combining ultra-fast mesh Wi-Fi and clear surveillance to create safer, smarter spaces.



EnGenius[®]
Unwire the Possibilities

